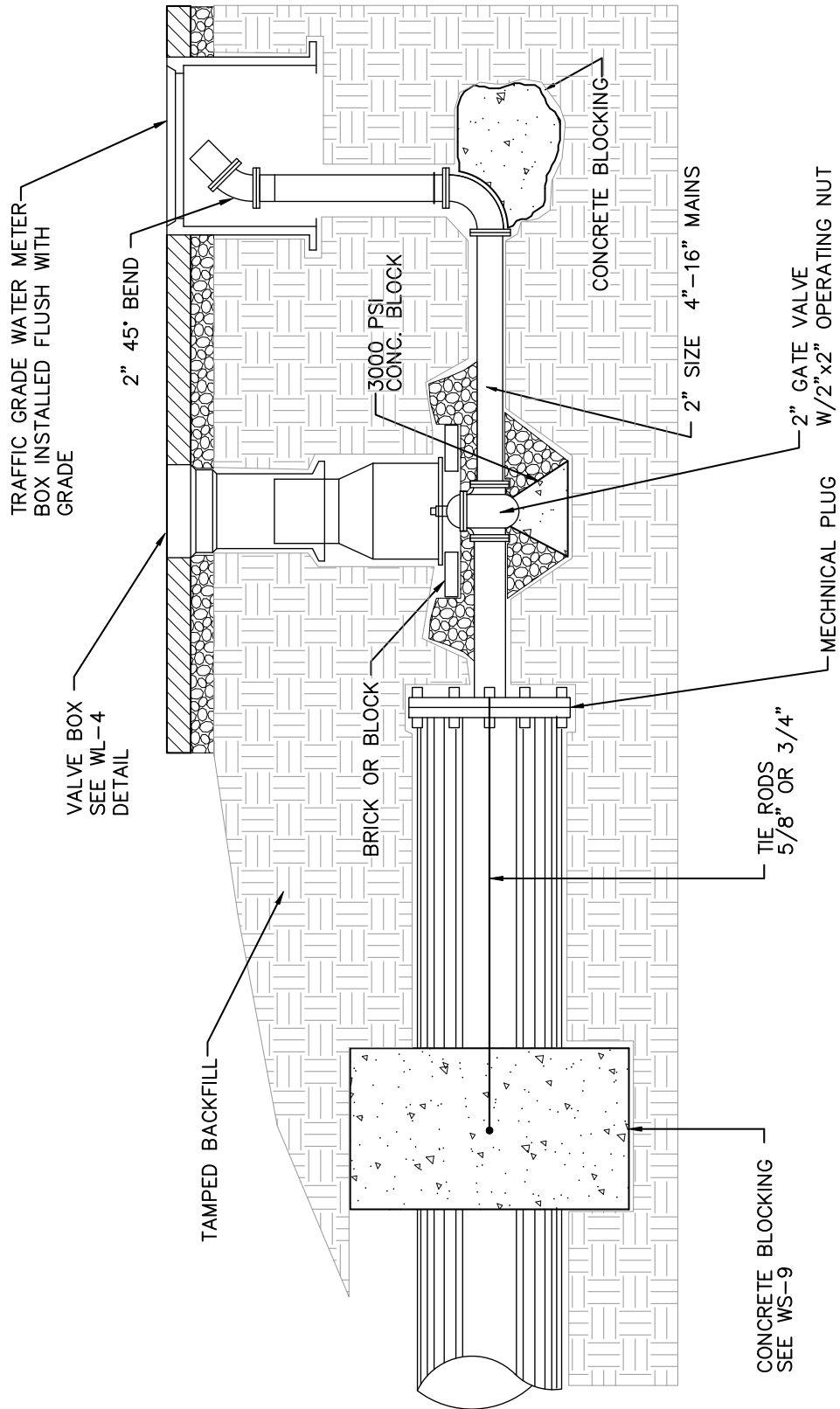


NOTES:

1. BACKFILL TO 95% OF MAXIMUM DENSITY WHERE EXCAVATIONS CUT THROUGH PAVEMENTS, CURBS, DRIVEWAYS AND SIDEWALKS, AND UNDER OR ADJACENT TO STRUCTURES.
2. STONE TO BE SIZE 1/2" TO 1-1/2", WELL TAMPED.
3. STONE IS REQUIRED TO 6" BELOW PIPE WHERE WET CONDITIONS OR ROCK IS ENCOUNTERED, ONLY AS DIRECTED.
4. HAND SHAPE TRENCH BOTTOM FOR LOWER QUADRANT OF PIPE AND BELLS.
5. PROVIDE MINIMUM 3'-0" COVER OVER PIPE.

DATE: JANUARY 2008	STANDARD DETAIL	CITY OF LANCASTER LANCASTER COUNTY, S.C.	
DRAWN BY: WKD			
SCALE: NONE	STANDARD WATER LINE TRENCH	FILE NO.	WL-1



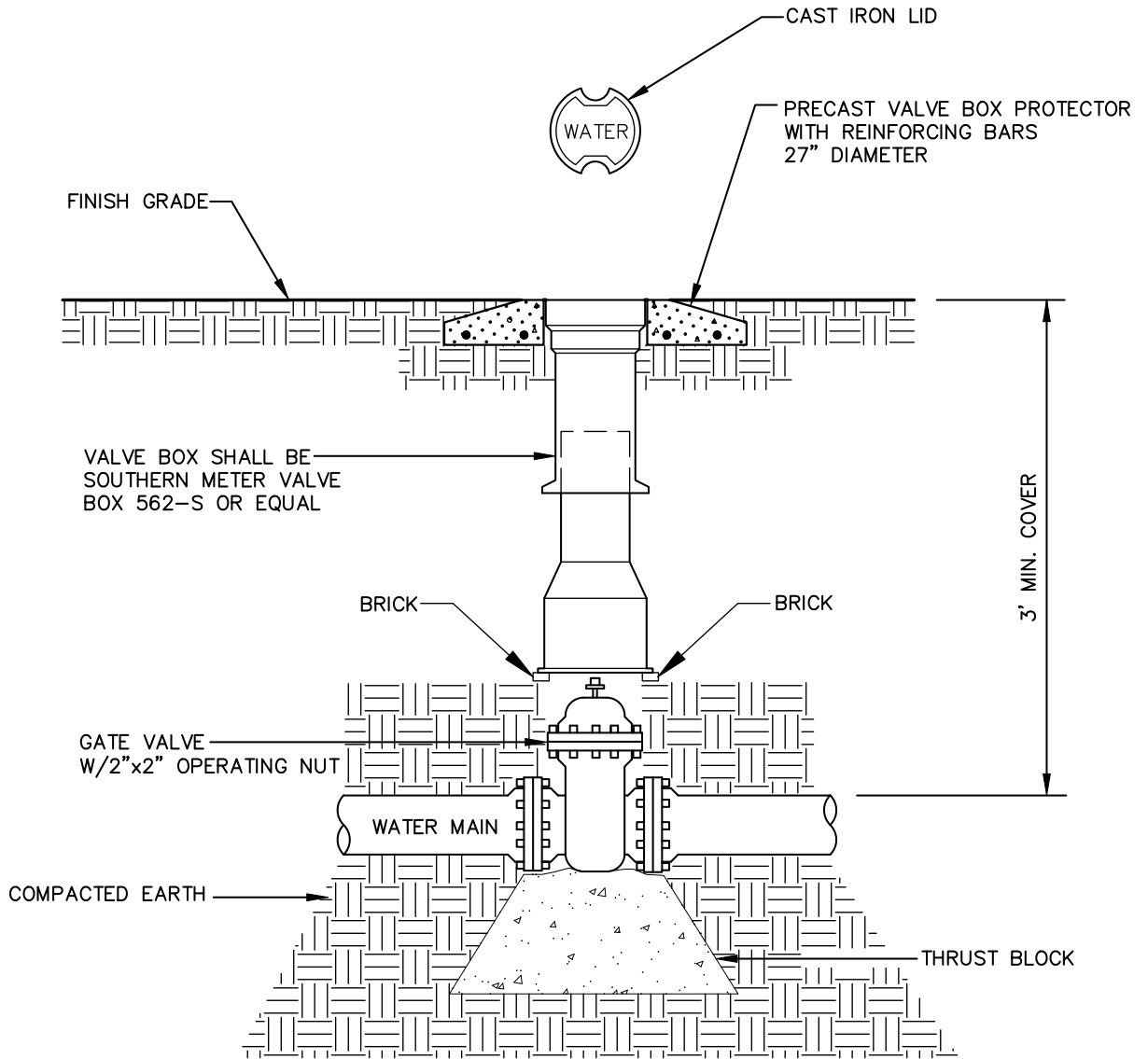
DATE: JANUARY 2008
DRAWN BY: WKD
SCALE: NONE

STANDARD DETAIL

BLOW OFF

CITY OF LANCASTER  
LANCASTER COUNTY, S.C.

FILE NO. WL-2



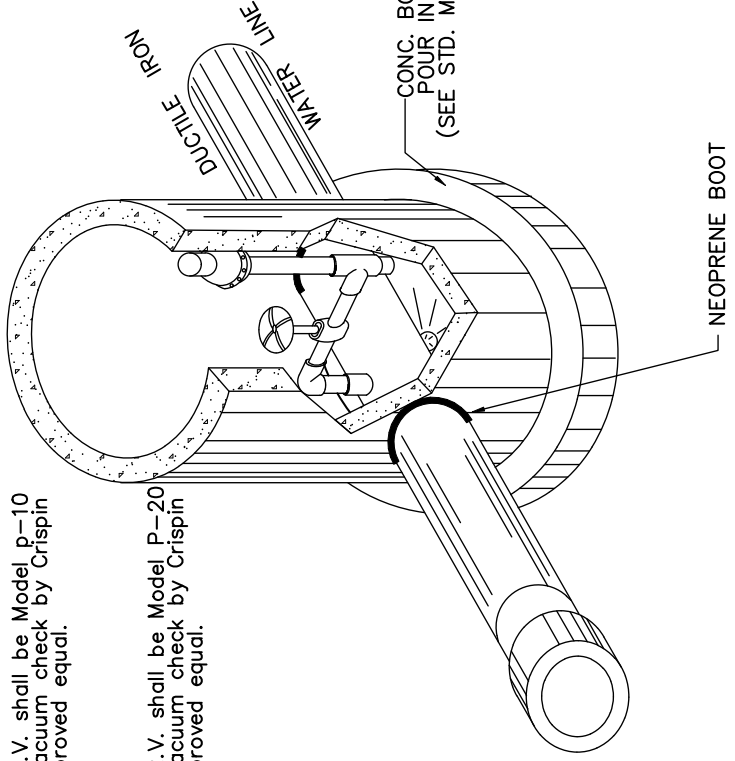
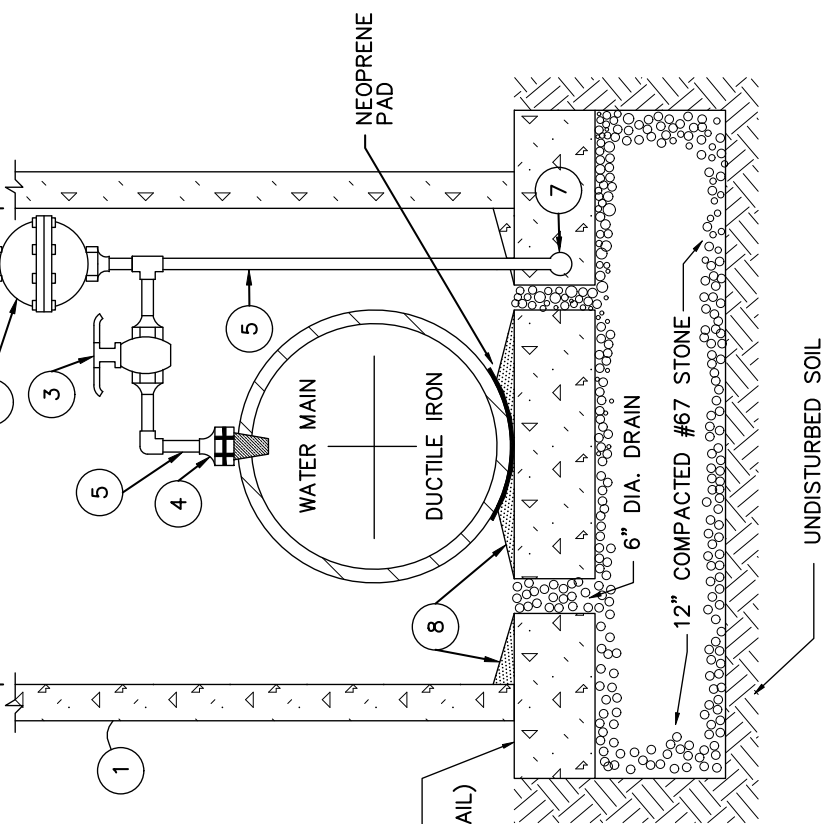
DATE: JANUARY 2008	STANDARD DETAIL	CITY OF LANCASTER LANCASTER COUNTY, S.C.
DRAWN BY: WKD		
SCALE: NONE		
	VALVE AND VALVE BOX	FILE NO. WL-3

- 1.) PRE CAST MANHOLE, SEE STANDARD DETAIL SS-3.
- 2.)⊙ AIR RELEASE VALVE W/ VACUUM CHECK UNIT.
- 3.)⊙ GATE VALVE.
- 4.)⊙ CORPORATION STOP (i.e. MUELLER H-15008).
- 5.)⊙ IPS THREAD RED BRASS PIPE AND FITTINGS.
- 6.) TRASH HOOD.
- 7.) PIPE CAP.
- 8.) GROUT, 1/8" / 1'-0" MIN. SLOPE TO DRAIN

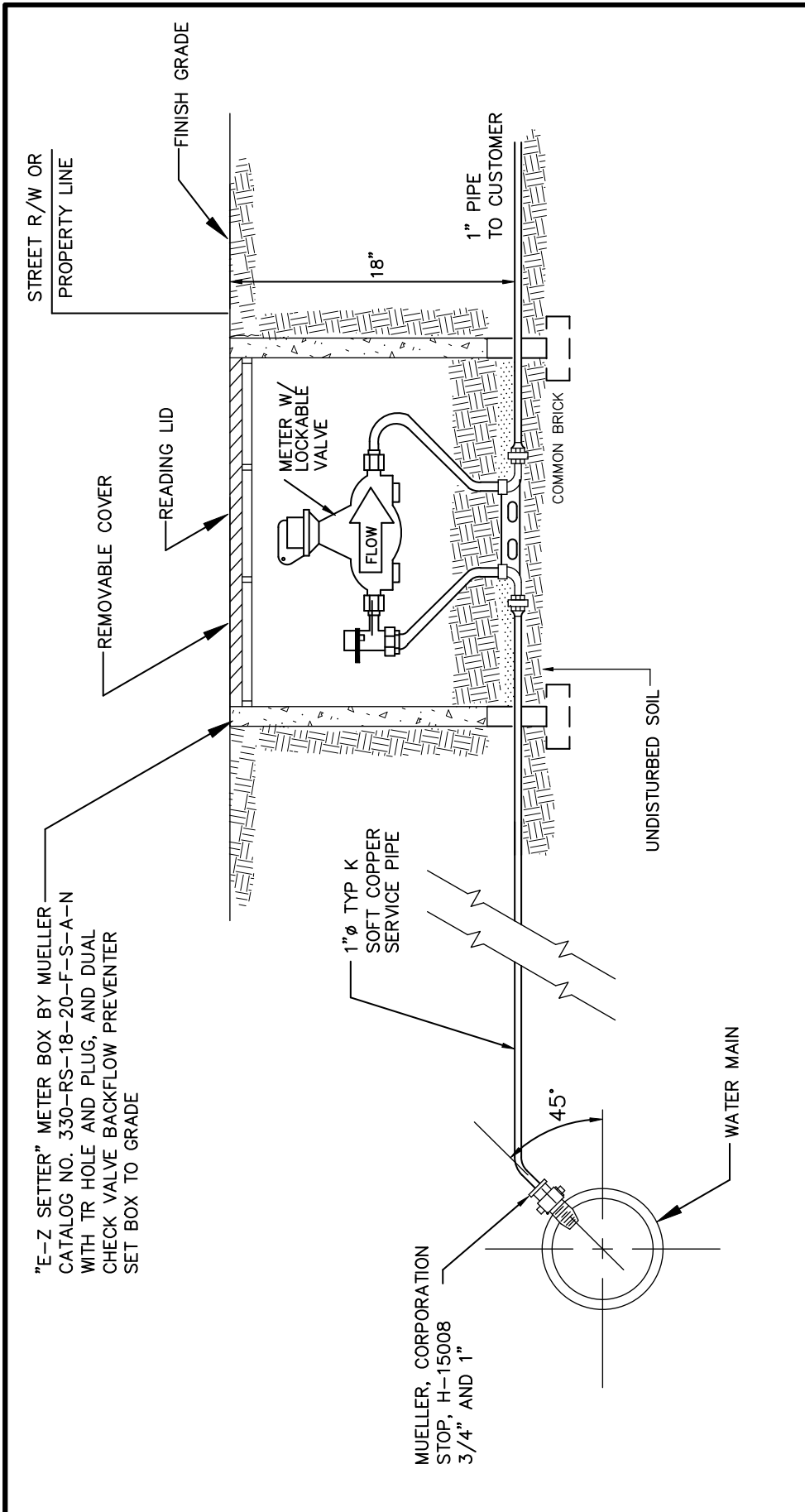
⊙ =1" FOR 12" WATER LINE AND SMALLER.  
 ⊙ =2" ALL WATER LINES LARGER THAN 12"

NOTE:  
 1" A.R.V. shall be Model P-10 with vacuum check by Crispin or approved equal.

2" A.R.V. shall be Model P-20 with vacuum check by Crispin or approved equal.

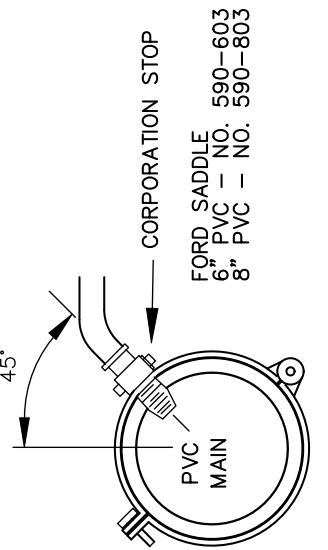


DATE: JANUARY 2008	<b>STANDARD DETAIL</b> <b>AIR RELEASE VALVE W/          VACUUM CHECK UNIT          IN PRECAST MANHOLE</b>	<b>CITY OF LANCASTER</b> <b>LANCASTER COUNTY, S.C.</b>
DRAWN BY: WKD		
SCALE: NONE		
	FILE NO. WL-4	



"E-Z SETTER" METER BOX BY MUELLER  
 CATALOG NO. 330-RS-18-20-F-S-A-N  
 WITH TR HOLE AND PLUG, AND DUAL  
 CHECK VALVE BACKFLOW PREVENTER  
 SET BOX TO GRADE

**ELEVATION**



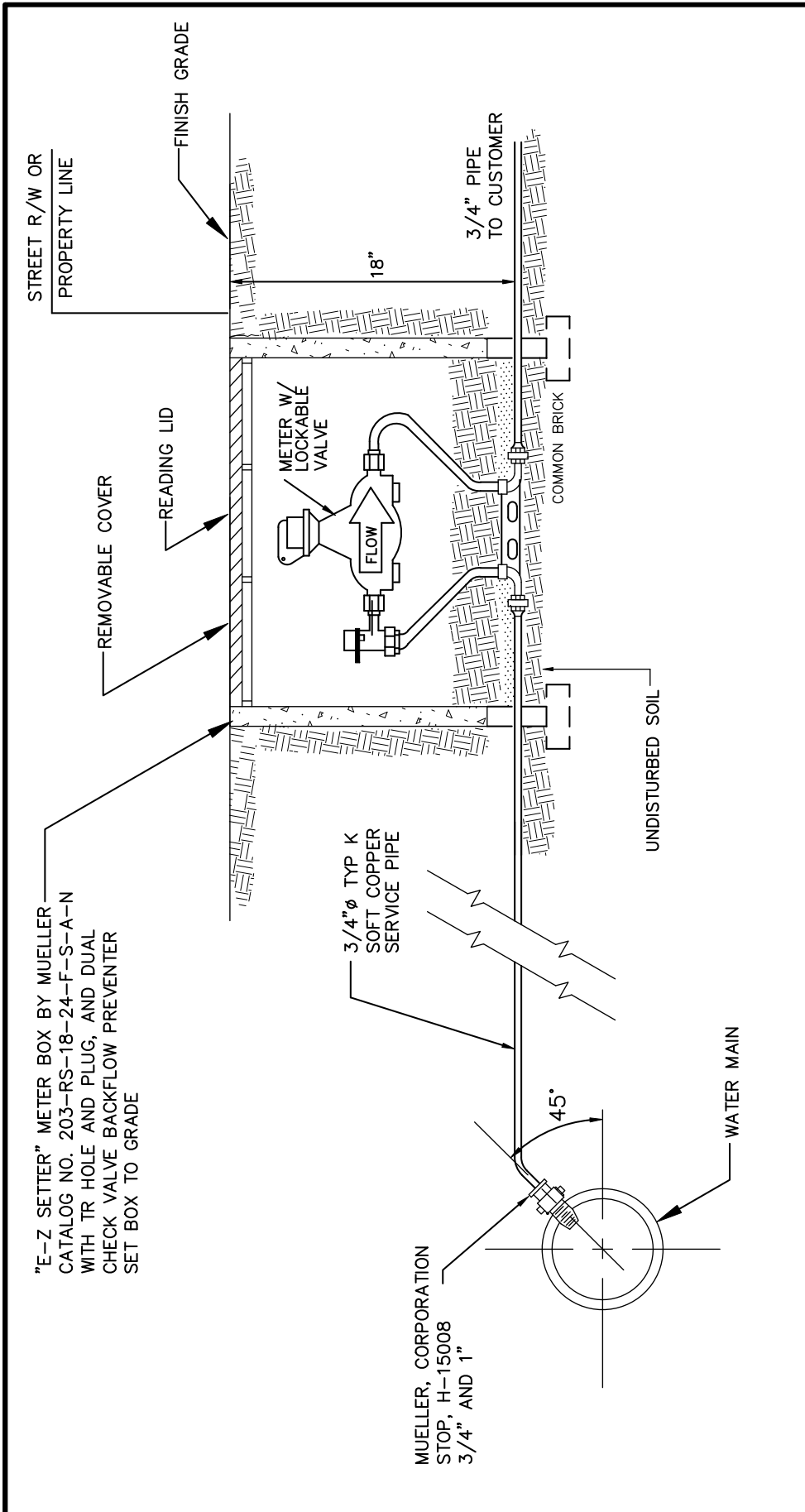
- NOTES:
1. DIP, CLASS 52, CEMENT MORTAR LINED COMPLYING WITH ANSI/AWWA 151/A21.5
  2. PUSH ON JOINTS WITH RUBBER GASKET AND LUBRICANT COMPLYING WITH ANSI/AWWA C111/A21.11
  3. MECHANICAL JOINT DUCTILE IRON FITTING COMPLYING WITH ANSI/AWWA C110/A21.5

DATE: JANUARY 2008
DRAWN BY: WKD
SCALE: NONE

**STANDARD DETAIL**

**1" WATER TAP AND METER DETAILS**

CITY OF LANCASTER LANCASTER COUNTY, S.C.	
FILE NO.	WL-5



STREET R/W OR  
PROPERTY LINE

FINISH GRADE

18"

3/4" PIPE  
TO CUSTOMER

REMOVABLE COVER

READING LID

METER W/  
LOCKABLE  
VALVE

FLOW

COMMON BRICK

UNDISTURBED SOIL

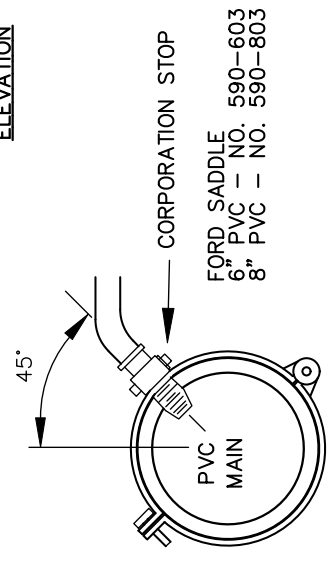
"E-Z SETTER" METER BOX BY MUELLER  
CATALOG NO. 203-RS-18-24-F-S-A-N  
WITH TR HOLE AND PLUG, AND DUAL  
CHECK VALVE BACKFLOW PREVENTER  
SET BOX TO GRADE

3/4" Ø TYP K  
SOFT COPPER  
SERVICE PIPE

MUELLER, CORPORATION  
STOP, H-15008  
3/4" AND 1"

WATER MAIN

ELEVATION



FORD SADDLE  
6" PVC - NO. 590-603  
8" PVC - NO. 590-803

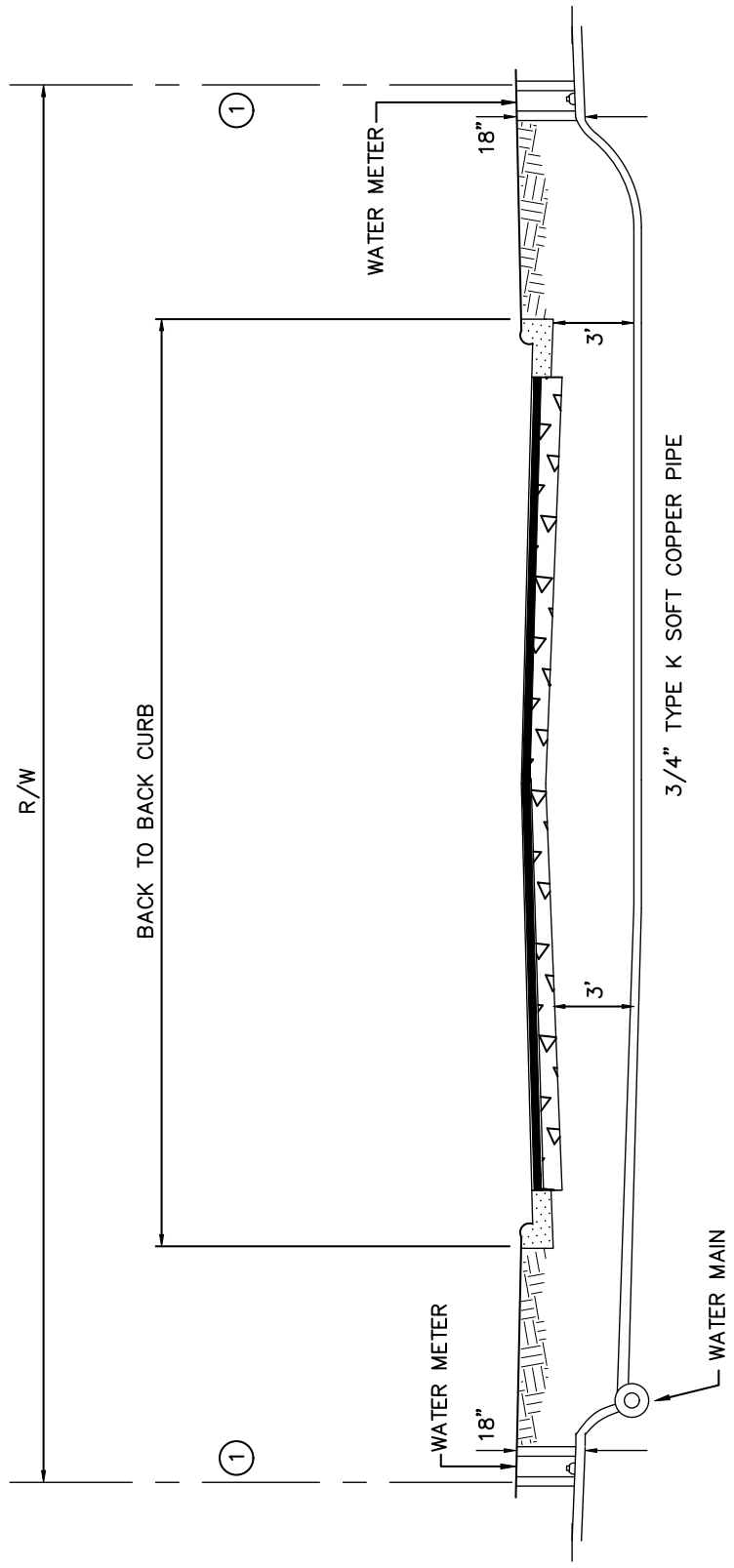
- NOTES:
1. DIP, CLASS 52, CEMENT MORTAR LINED COMPLYING WITH ANSI/AWWA 151/A21.5
  2. PUSH ON JOINTS WITH RUBBER GASKET AND LUBRICANT COMPLYING WITH ANSI/AWWA C111/A21.11
  3. MECHANICAL JOINT DUCTILE IRON FITTING COMPLYING WITH ANSI/AWWA C110/A21.5

DATE: JANUARY 2008
DRAWN BY: WKD
SCALE: NONE

**STANDARD DETAIL**

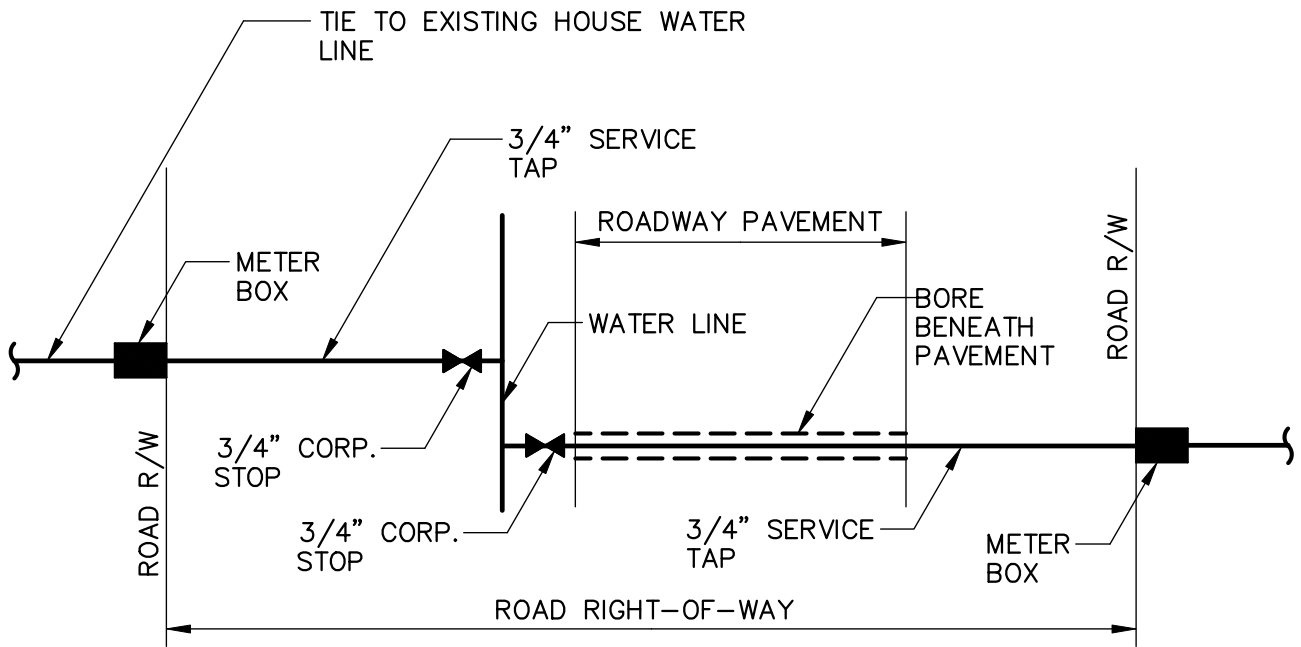
**3/4" x 5/8" WATER TAP AND  
METER DETAILS**

CITY OF LANCASTER LANCASTER COUNTY, S.C.	
FILE NO.	WL-6



(1) SEE STD. DETAIL WL-6 FOR  
METER, METER BOX & TAP DETAILS.

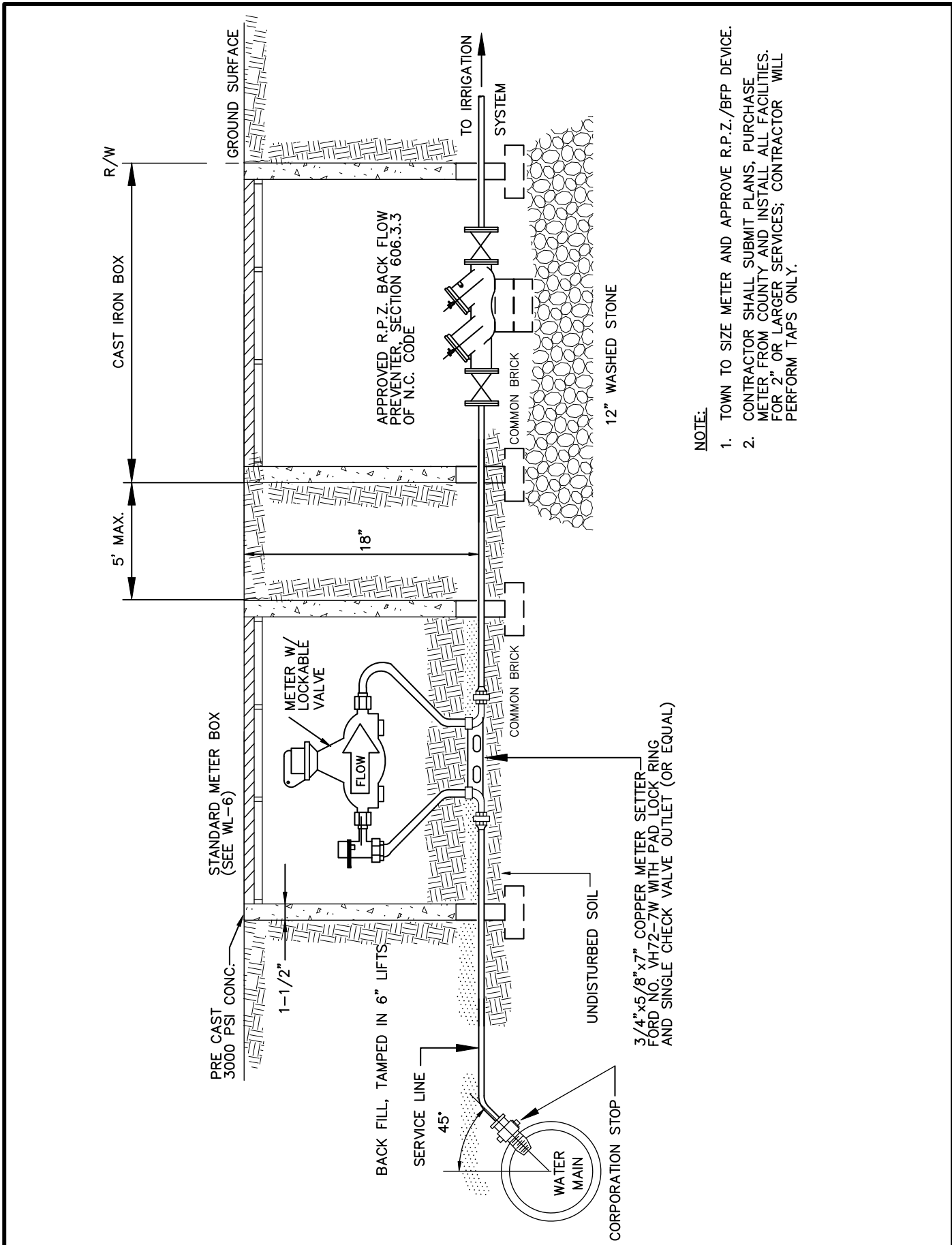
DATE: JANUARY 2008	STANDARD DETAIL	CITY OF LANCASTER LANCASTER COUNTY, S.C.
DRAWN BY: WKD		
SCALE: NONE	STANDARD STREET X-SECTION SHOWING WATER TAP DEPTH	FILE NO. WL-7



PLAN

DATE: JANUARY 2008	STANDARD DETAIL	CITY OF LANCASTER	
DRAWN BY: WKD		LANCASTER COUNTY, S.C.	
SCALE: NONE	TYPICAL SERVICE INSTALLATION	FILE NO.	WL-8

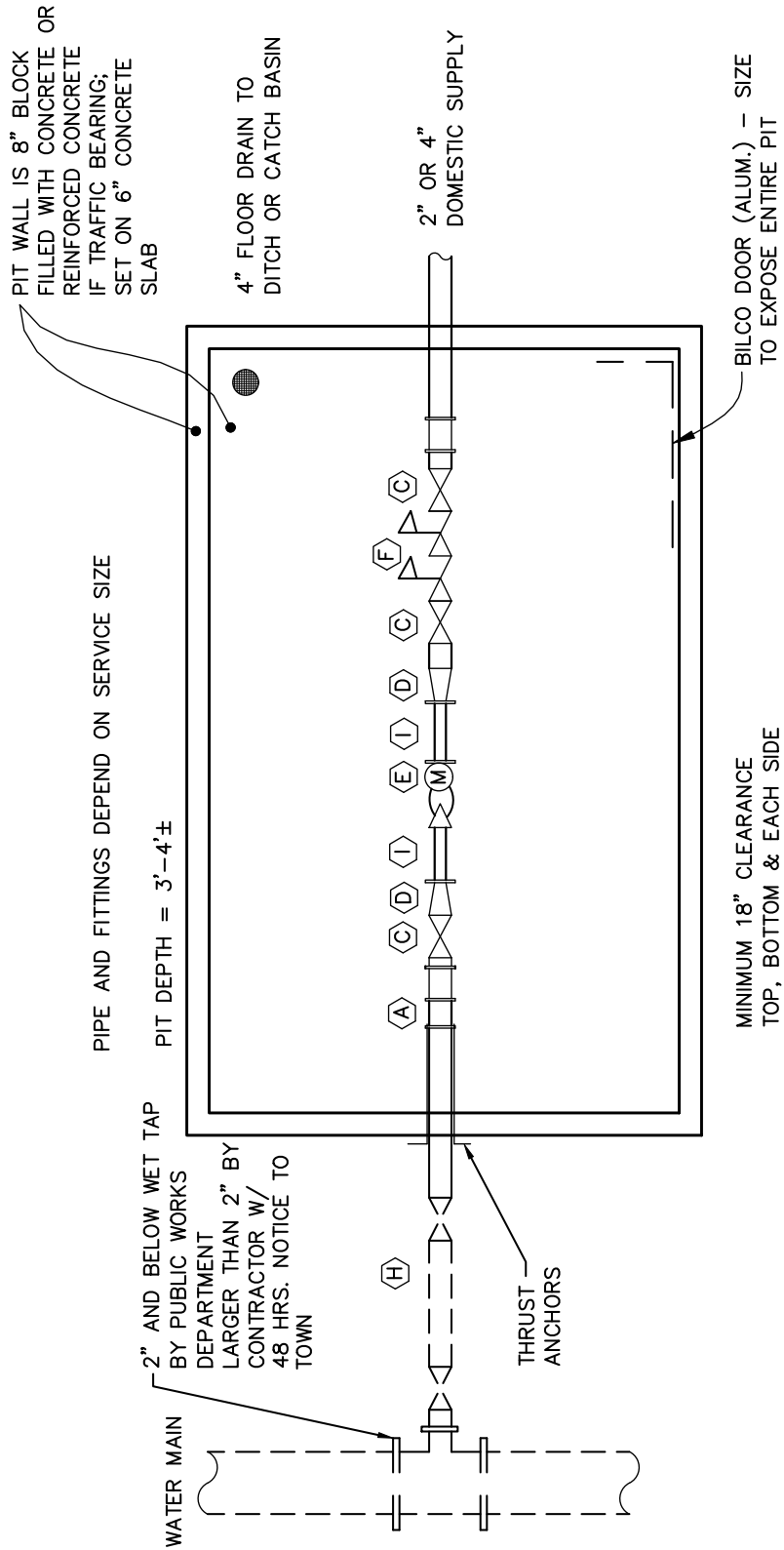




**NOTE:**

1. TOWN TO SIZE METER AND APPROVE R.P.Z./BFP DEVICE.
2. CONTRACTOR SHALL SUBMIT PLANS, PURCHASE METER FROM COUNTY AND INSTALL ALL FACILITIES. FOR 2" OR LARGER SERVICES; CONTRACTOR WILL PERFORM TAPS ONLY.

DATE: JANUARY 2008	<h2>STANDARD DETAIL</h2> <h3>TYPICAL IRRIGATION SYSTEM CONNECTION</h3>	<p>CITY OF LANCASTER LANCASTER COUNTY, S.C.</p>
DRAWN BY: WKD		
SCALE: NONE		<p>FILE NO. WL-9</p>



- (A) PIPE TO BE COPPER OR DUCTILE IRON
- (C) OS&Y VALVE
- (D) REDUCER
- (E) METER - SIZED AND APPROVED BY TOWN
- (F) DOUBLE CHECK VALVE - APPROVED BY TOWN
- (H) CL51 - SLIP JOINT DUCTILE IRON
- (I) 5 PIPE DIAMETERS OF STRAIGHT PIPE ON BOTH SIDES OF METER; I.E., FOR 2" METER I=10", etc.

FOR METERS 2" AND BELOW, WORK TO BE PERFORMED BY CITY OF LANCASTER. FOR METERS 3" AND ABOVE, METERS PURCHASED BY CONTRACTOR WITH APPROVAL BY THE CITY OF LANCASTER.

DATE: JANUARY 2008	<b>STANDARD DETAIL</b> <b>METER PIT DETAIL</b> <b>FOR 2" AND 4" LINES</b> <b>SINGLE DOMESTIC SUPPLY W/O BY-PASS</b>	<b>CITY OF LANCASTER</b> <b>LANCASTER COUNTY, S.C.</b>
DRAWN BY: WKD		
SCALE: NONE		
		FILE NO. <span style="float: right;">WL-10</span>

PIT WALL IS 8" BLOCK FILLED WITH CONCRETE OR REINFORCED CONCRETE IF TRAFFIC BEARING; SET ON 6" CONCRETE SLAB

4" FLOOR DRAIN TO DITCH OR CATCH BASIN

1 1/2", 2" OR 4" DOMESTIC SUPPLY

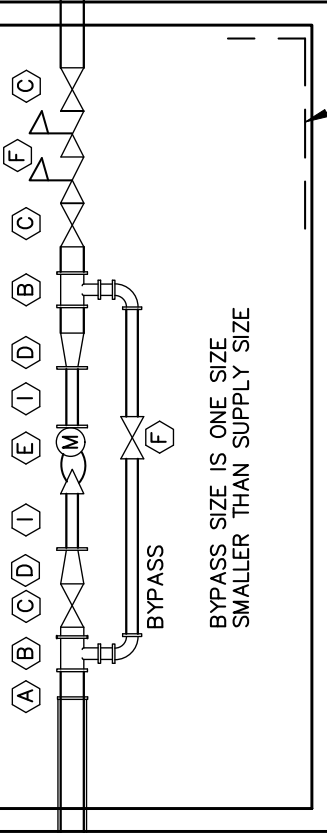
BILCO DOOR (ALUM.) - SIZE TO EXPOSE ENTIRE PIT

SEE WS-30, FOR PIPE AND FITTING SCHEDULE

PIPE AND FITTINGS DEPEND ON SERVICE SIZE  
3' - 4'± DEEP

2" AND BELOW WET TAP BY PUBLIC WORKS DEPARTMENT LARGER THAN 2" BY CONTRACTOR W/ 48 HRS. NOTICE TO TOWN

WATER MAIN



BYPASS SIZE IS ONE SIZE SMALLER THAN SUPPLY SIZE

A PIPE TO BE COPPER OR DUCTILE IRON

B TEE

C OS&Y VALVE

D REDUCER

E METER - SIZED AND APPROVED BY TOWN

F DOUBLE CHECK VALVE OR RPZ - APPROVED BY TOWN

H CL51 - SLIP JOINT DUCTILE IRON

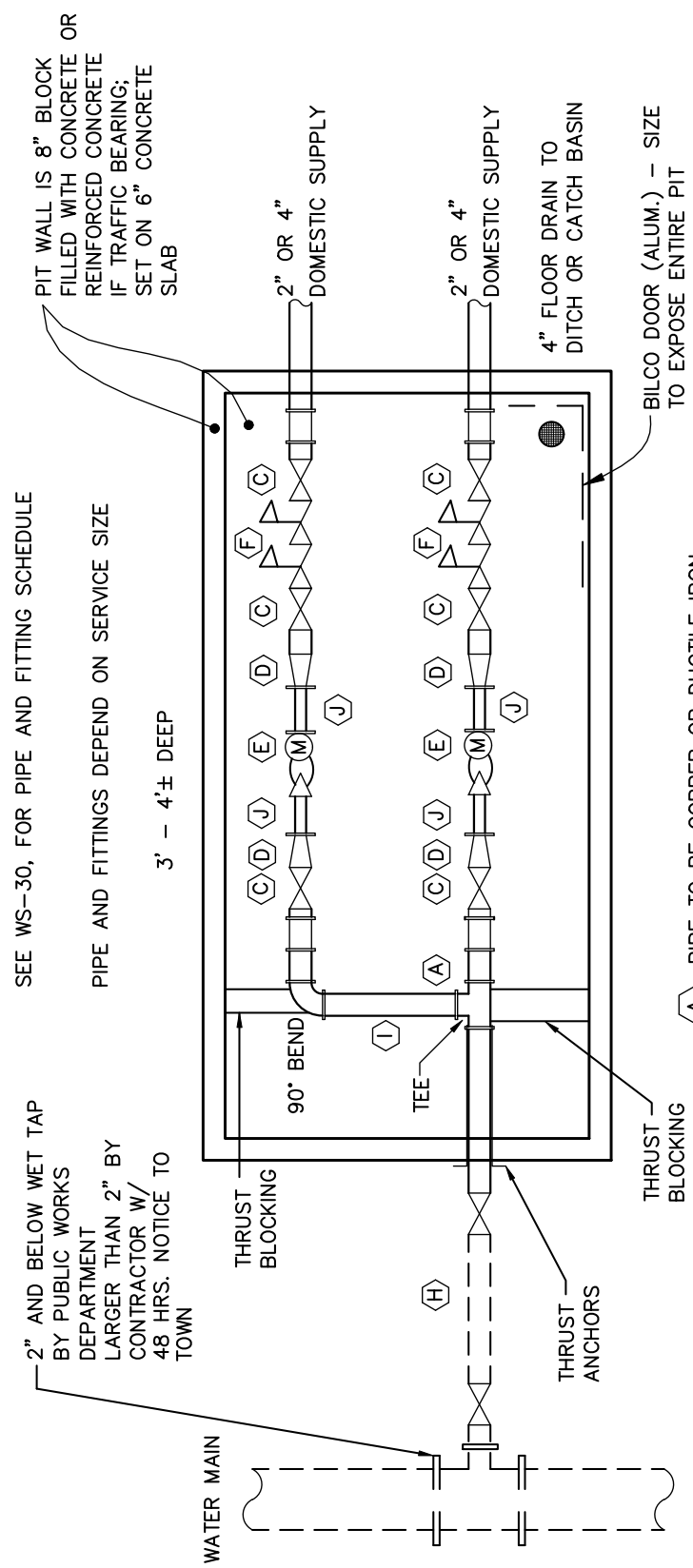
I 5 PIPE DIAMETERS OF STRAIGHT PIPE ON BOTH SIDES OF METER; I.E., FOR 1-1/2" METER J=7.5", etc.

FOR METERS 2" AND BELOW, WORK TO BE PERFORMED BY THE CITY OF LANCASTER. FOR METERS 3" AND ABOVE, METERS PURCHASED BY CONTRACTOR WITH APPROVAL BY THE CITY OF LANCASTER.

DATE: JANUARY 2008
DRAWN BY: WKD
SCALE: NONE

**STANDARD DETAIL**  
**METER PIT DETAIL**  
**FOR 2" AND 4" LINES**  
**SINGLE DOMESTIC SUPPLY W/BY-PASS**

CITY OF LANCASTER LANCASTER COUNTY, S.C.	
FILE NO.	WL-11



SEE WS-30, FOR PIPE AND FITTING SCHEDULE  
 PIPE AND FITTINGS DEPEND ON SERVICE SIZE  
 3' - 4'± DEEP

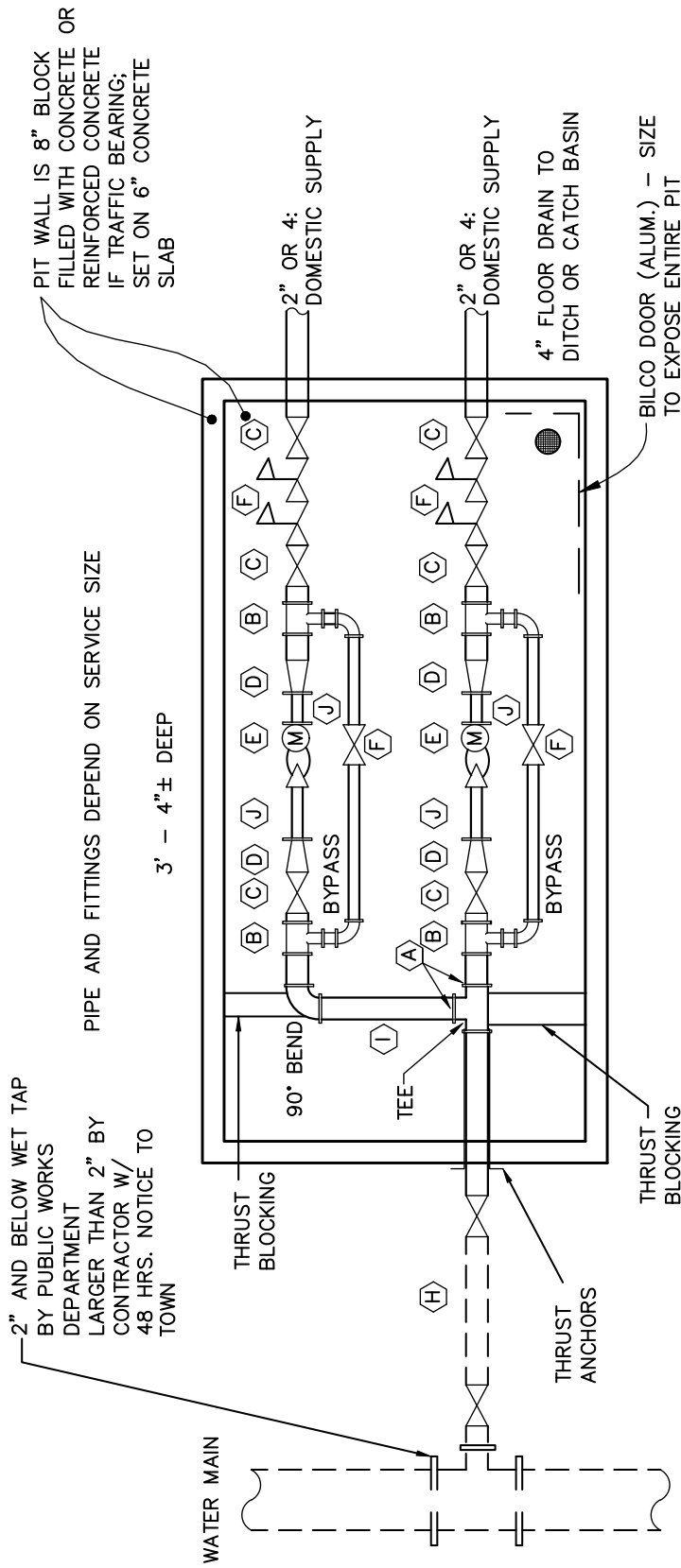
2" AND BELOW WET TAP  
 BY PUBLIC WORKS  
 DEPARTMENT  
 LARGER THAN 2" BY  
 CONTRACTOR W/  
 48 HRS. NOTICE TO  
 TOWN

PIT WALL IS 8" BLOCK  
 FILLED WITH CONCRETE OR  
 REINFORCED CONCRETE  
 IF TRAFFIC BEARING;  
 SET ON 6" CONCRETE  
 SLAB

- (A) PIPE TO BE COPPER OR DUCTILE IRON
- (C) OS&Y VALVE
- (D) REDUCER
- (E) METER - SIZED AND APPROVED BY TOWN
- (F) DOUBLE CHECK VALVE OR RPZ - APPROVED BY TOWN
- (H) CL51 DIP - SLIP JOINT DUCTILE IRON
- (I) DIP - FLANGED JOINTS
- (J) 5 PIPE DIAMETERS OF STRAIGHT PIPE ON BOTH SIDES OF METER; IE, FOR 1-1/2" METER J = 7.5", etc.

FOR METERS 2" AND BELOW, WORK TO  
 BE PERFORMED BY THE CITY OF  
 LANCASTER. FOR METERS 3" AND ABOVE,  
 METERS PURCHASED BY CONTRACTOR  
 WITH APPROVAL BY THE CITY OF  
 LANCASTER.

DATE: JANUARY 2008	<b>STANDARD DETAIL</b> <b>METER PIT DETAIL</b> <b>FOR 2" AND 4" LINES</b> <b>MULTIPLE DOMESTIC SUPPLY W/O BY-PASS</b>	<b>CITY OF LANCASTER</b> <b>LANCASTER COUNTY, S.C.</b>
DRAWN BY: WKD		
SCALE: NONE		
	FILE NO.	WL-12



2" AND BELOW WET TAP BY PUBLIC WORKS DEPARTMENT LARGER THAN 2" BY CONTRACTOR W/ 48 HRS. NOTICE TO TOWN

PIT WALL IS 8" BLOCK FILLED WITH CONCRETE OR REINFORCED CONCRETE IF TRAFFIC BEARING; SET ON 6" CONCRETE SLAB

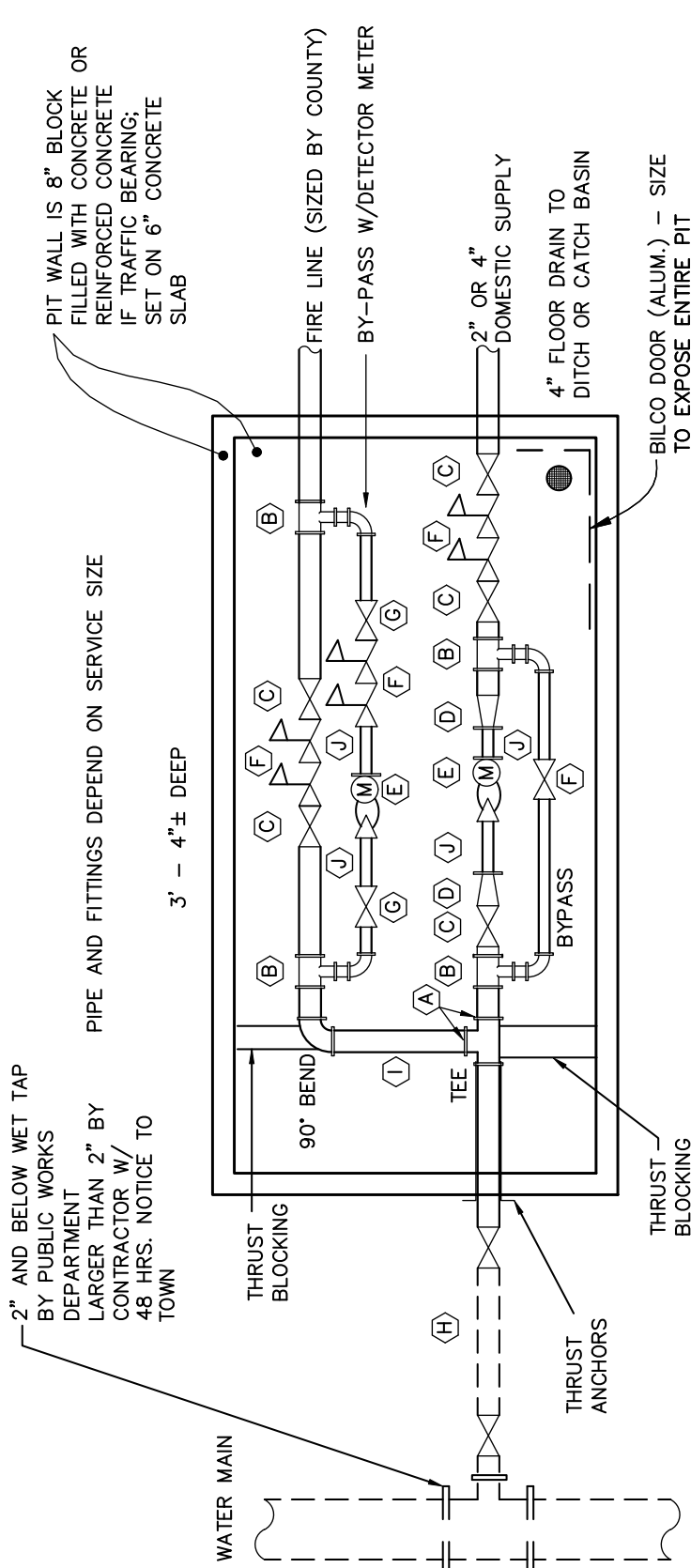
PIPE AND FITTINGS DEPEND ON SERVICE SIZE

3' - 4"± DEEP

- (A) PIPE TO BE COPPER OR DUCTILE IRON
- (B) TEE
- (C) OS&Y VALVE
- (D) REDUCER
- (E) METER - SIZED AND APPROVED BY TOWN
- (F) DOUBLE CHECK VALVE OR RPZ APPROVED BY TOWN
- (H) CL51 DIP - SLIP JOINT
- (I) DIP - FLANGED JOINTS
- (J) 5 PIPE DIAMETERS OF STRAIGHT PIPE ON BOTH SIDES OF METER; I.E., FOR 2" METER J=10", etc.

FOR METERS 2" AND BELOW, WORK TO BE PERFORMED BY THE CITY OF LANCASTER. FOR METERS 3" AND ABOVE, METERS PURCHASED BY CONTRACTOR WITH APPROVAL BY THE CITY OF LANCASTER.

DATE: JANUARY 2008	<b>STANDARD DETAIL</b> <b>METER PIT DETAIL</b> <b>FOR 2" AND 4" LINES</b> <b>MULTIPLE DOMESTIC SUPPLY W/BY-PASS</b>	<b>CITY OF LANCASTER</b> <b>LANCASTER COUNTY, S.C.</b>
DRAWN BY: WKD		
SCALE: NONE		
	FILE NO.	WL-13



PIT WALL IS 8" BLOCK FILLED WITH CONCRETE OR REINFORCED CONCRETE IF TRAFFIC BEARING; SET ON 6" CONCRETE SLAB

PIPE AND FITTINGS DEPEND ON SERVICE SIZE

2" AND BELOW WET TAP BY PUBLIC WORKS DEPARTMENT LARGER THAN 2" BY CONTRACTOR W/ 48 HRS. NOTICE TO TOWN

3' - 4"± DEEP

FIRE LINE (SIZED BY COUNTY)  
 BY-PASS W/DETECTOR METER  
 2" OR 4" DOMESTIC SUPPLY  
 4" FLOOR DRAIN TO DITCH OR CATCH BASIN  
 BILCO DOOR (ALUM.) - SIZE TO EXPOSE ENTIRE PIT

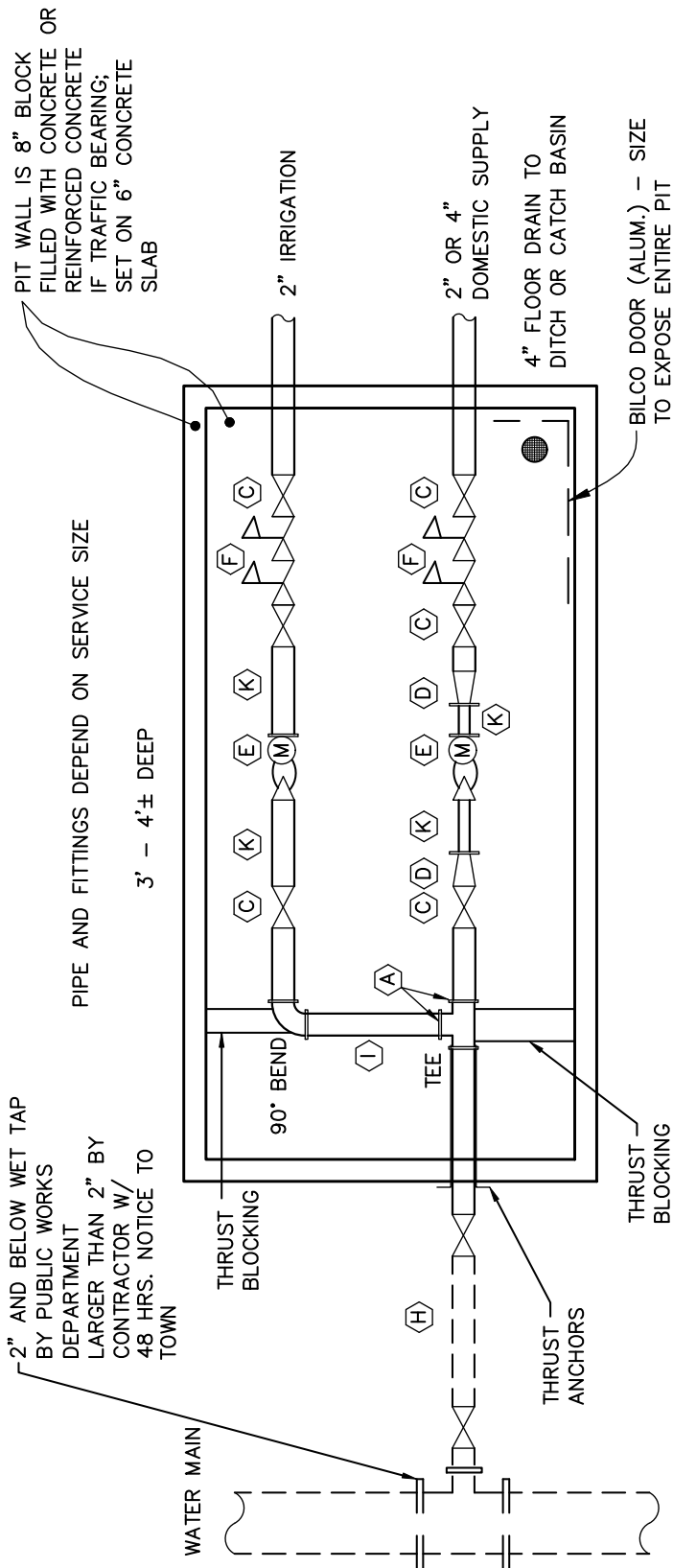
- (A) PIPE TO BE COPPER OR DUCTILE IRON
- (B) TEE
- (C) OS&Y VALVE
- (D) REDUCER
- (E) METER - SIZED AND APPROVED BY TOWN
- (F) DOUBLE CHECK VALVE OR RPZ - APPROVED BY TOWN
- (H) CL51 DIP - SLIP JOINT
- (I) DIP - FLANGED JOINTS
- (J) 5 PIPE DIAMETERS OF STRAIGHT PIPE ON BOTH SIDES OF METER; I.E., FOR 2" METER J=10", etc.

FOR METERS 2" AND BELOW, WORK TO BE PERFORMED BY THE CITY OF LANCASTER. FOR METERS 3" AND ABOVE, METERS PURCHASED BY CONTRACTOR WITH APPROVAL BY THE CITY OF LANCASTER.

DATE: JANUARY 2008
DRAWN BY: WKD
SCALE: NONE

**STANDARD DETAIL**  
**METER PIT DETAIL**  
**FOR 2" AND 4" LINES**  
**SINGLE DOMESTIC SUPPLY**  
**WITH FIRE LINE AND BY-PASS**

CITY OF LANCASTER LANCASTER COUNTY, S.C.	
FILE NO.	WL-14



PIT WALL IS 8" BLOCK FILLED WITH CONCRETE OR REINFORCED CONCRETE IF TRAFFIC BEARING; SET ON 6" CONCRETE SLAB

PIPE AND FITTINGS DEPEND ON SERVICE SIZE

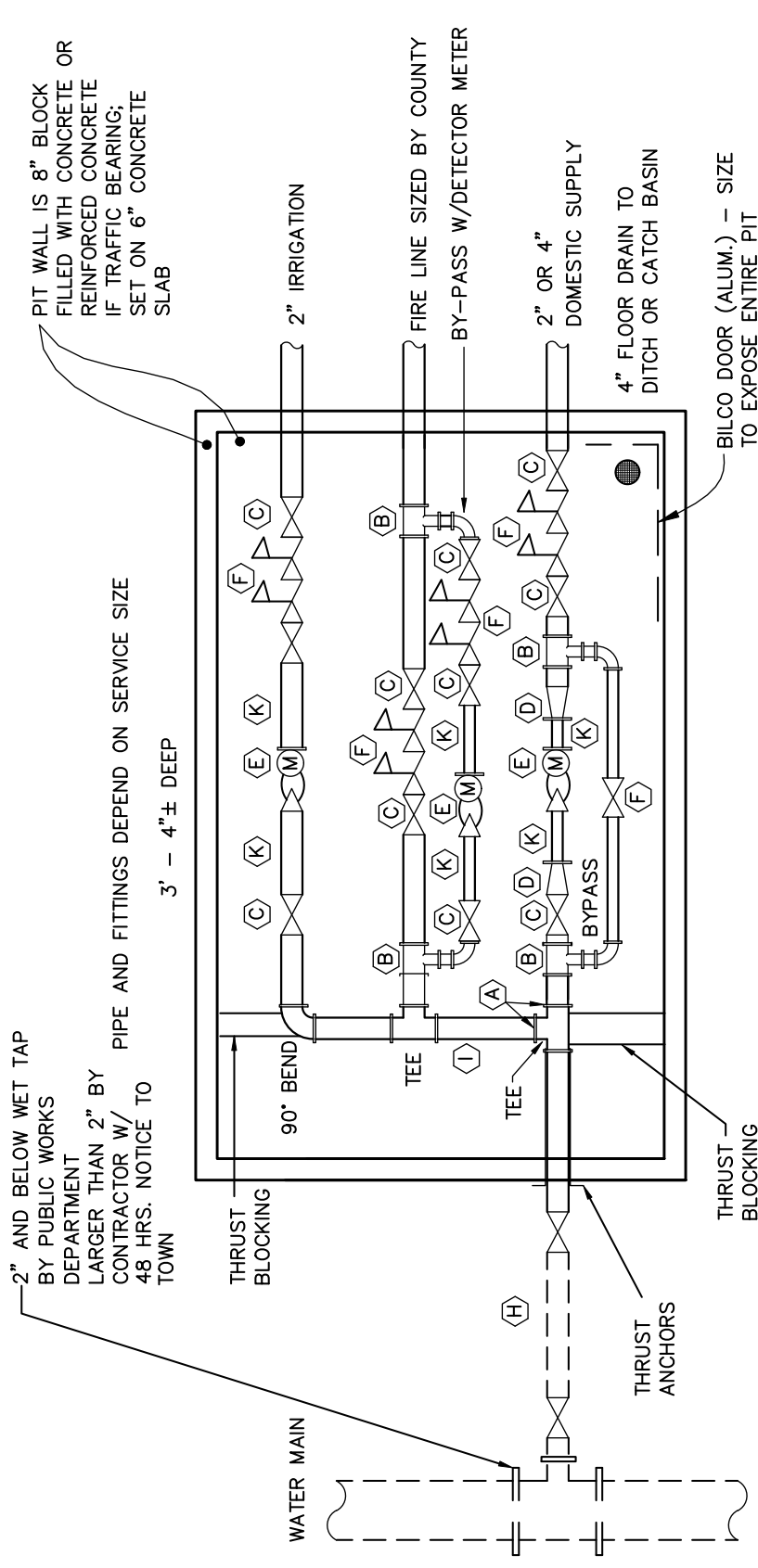
3' - 4'± DEEP

2" AND BELOW WET TAP BY PUBLIC WORKS DEPARTMENT LARGER THAN 2" BY CONTRACTOR W/ 48 HRS. NOTICE TO TOWN

- (A) PIPE TO BE COPPER OR DUCTILE IRON (THIS IS A FLANGED REDUCER)
- (B) TEE
- (C) OS&Y VALVE
- (D) REDUCER
- (E) METER - SIZED AND APPROVED BY TOWN
- (F) DOUBLE CHECK VALVE OR RP2 - APPROVED BY TOWN
- (H) CL51 DIP - SLIP JOINT
- (I) DIP - FLANGED JOINTS OR COPPER
- (K) 5 PIPE DIAMETERS OF STRAIGHT PIPE ON BOTH SIDES OF METER, I.E., FOR 2" METER J=10". etc.

FOR METERS 2" AND BELOW, WORK TO BE PERFORMED BY THE CITY OF LANCASTER. FOR METERS 3" AND ABOVE, METERS PURCHASED BY CONTRACTOR WITH APPROVAL BY THE CITY OF LANCASTER.

DATE: JANUARY 2008	<b>STANDARD DETAIL</b> <b>METER PIT DETAIL</b> <b>FOR 2" AND 4" LINES</b> <b>SINGLE DOMESTIC SUPPLY</b> <b>WITH IRRIGATION METER</b>	<b>CITY OF LANCASTER</b> <b>LANCASTER COUNTY, S.C.</b>
DRAWN BY: WKD		
SCALE: NONE		
		FILE NO. WL-15



PIT WALL IS 8" BLOCK FILLED WITH CONCRETE OR REINFORCED CONCRETE IF TRAFFIC BEARING; SET ON 6" CONCRETE SLAB

2" AND BELOW WET TAP BY PUBLIC WORKS DEPARTMENT LARGER THAN 2" BY CONTRACTOR W/ 48 HRS. NOTICE TO TOWN

PIPE AND FITTINGS DEPEND ON SERVICE SIZE

3' - 4"± DEEP

WATER MAIN

THRUST BLOCKING

2" IRRIGATION

FIRE LINE SIZED BY COUNTY

BY-PASS W/DETECTOR METER

2" OR 4" DOMESTIC SUPPLY

4" FLOOR DRAIN TO DITCH OR CATCH BASIN

BILCO DOOR (ALUM.) - SIZE TO EXPOSE ENTIRE PIT

THRUST BLOCKING

THRUST ANCHORS

- (A) PIPE TO BE COPPER OR DUCTILE IRON
- (B) TEE
- (C) OS&Y VALVE
- (D) REDUCER
- (E) METER - SIZED AND APPROVED BY TOWN
- (F) DOUBLE CHECK VALVE OR RPZ - APPROVED BY TOWN
- (H) CL51 DIP - SLIP JOINT
- (I) DIP - FLANGED JOINTS
- (K) 5 PIPE DIAMETERS OF STRAIGHT PIPE ON BOTH SIDES OF METER, I.E., FOR 2" METER J=10", etc.

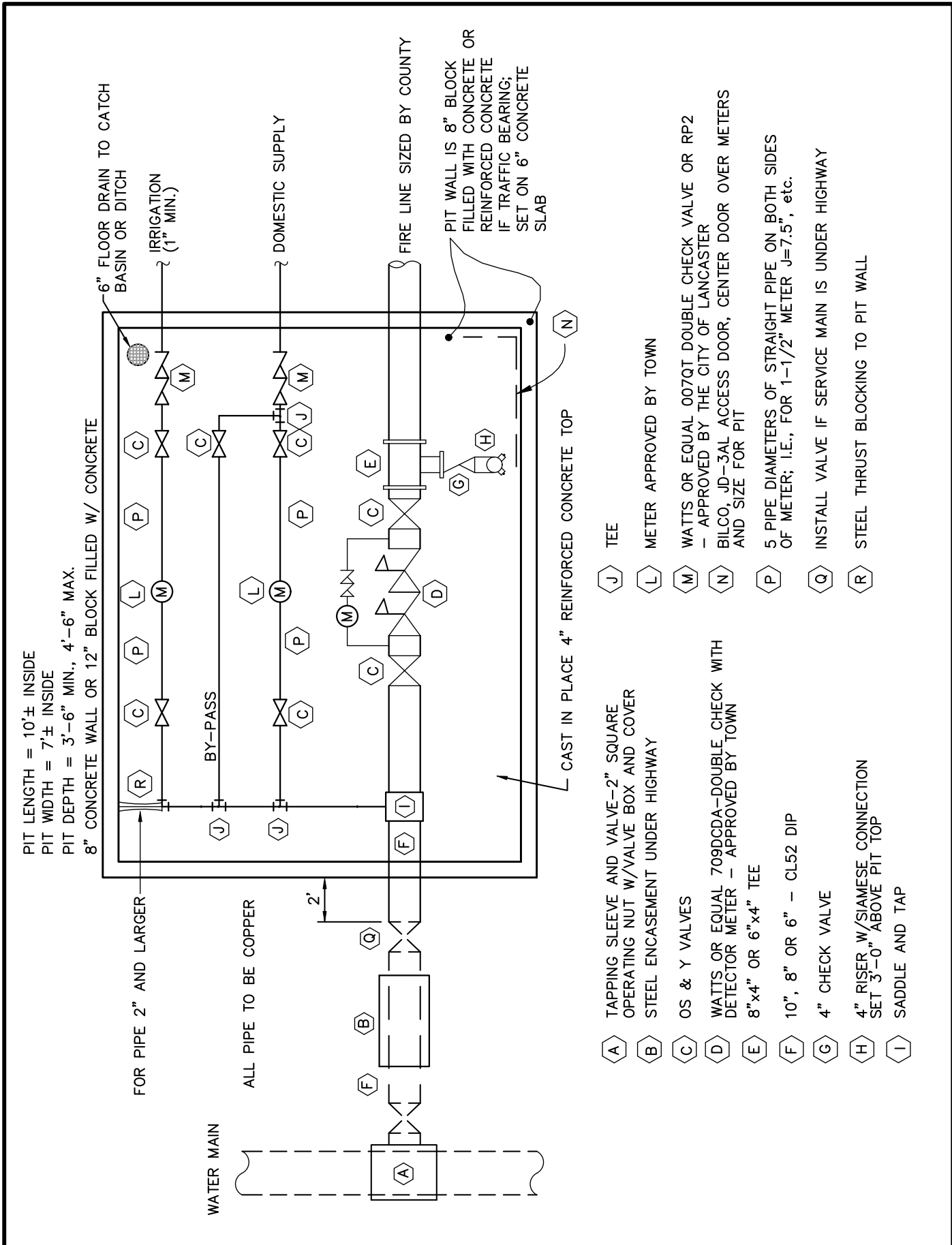
FOR METERS 2" AND BELOW, WORK TO BE PERFORMED BY THE CITY OF LANCASTER. FOR METERS 3" AND ABOVE, METERS PURCHASED BY CONTRACTOR WITH APPROVAL BY THE CITY OF LANCASTER.

DATE: JANUARY 2008
DRAWN BY: WKD
SCALE: NONE

**STANDARD DETAIL**  
**METER PIT DETAIL**  
**FOR 2" AND 4" LINES**  
**SINGLE DOMESTIC SUPPLY**  
**W/FIRE LINE AND IRRIGATION METER**

CITY OF LANCASTER LANCASTER COUNTY, S.C.	
FILE NO.	WL-16





PIT LENGTH = 10'± INSIDE  
 PIT WIDTH = 7'± INSIDE  
 PIT DEPTH = 3'-6" MIN., 4'-6" MAX.  
 8" CONCRETE WALL OR 12" BLOCK FILLED W/ CONCRETE

FOR PIPE 2" AND LARGER

ALL PIPE TO BE COPPER

2'

- (A) TAPPING SLEEVE AND VALVE-2" SQUARE OPERATING NUT W/VALVE BOX AND COVER
- (B) STEEL ENCASUREMENT UNDER HIGHWAY
- (C) OS & Y VALVES
- (D) WATTS OR EQUAL 709DCDA-DOUBLE CHECK WITH DETECTOR METER - APPROVED BY TOWN
- (E) 8"x4" OR 6"x4" TEE
- (F) 10", 8" OR 6" - CL52 DIP
- (G) 4" CHECK VALVE
- (H) 4" RISER W/SIAMESE CONNECTION SET 3'-0" ABOVE PIT TOP
- (I) SADDLE AND TAP
- (J) TEE
- (L) METER APPROVED BY TOWN
- (M) WATTS OR EQUAL 007QT DOUBLE CHECK VALVE OR RP2 - APPROVED BY THE CITY OF LANCASTER
- (N) BILCO, JD-3AL ACCESS DOOR, CENTER DOOR OVER METERS AND SIZE FOR PIT
- (P) 5 PIPE DIAMETERS OF STRAIGHT PIPE ON BOTH SIDES OF METER; I.E., FOR 1-1/2" METER J=7.5", etc.
- (Q) INSTALL VALVE IF SERVICE MAIN IS UNDER HIGHWAY
- (R) STEEL THRUST BLOCKING TO PIT WALL

DATE: JANUARY 2008  
 DRAWN BY: WKD  
 SCALE: NONE

STANDARD DETAIL  
 COMMERCIAL METER PIT

CITY OF LANCASTER  
 LANCASTER COUNTY, S.C.  
 FILE NO. WL-17