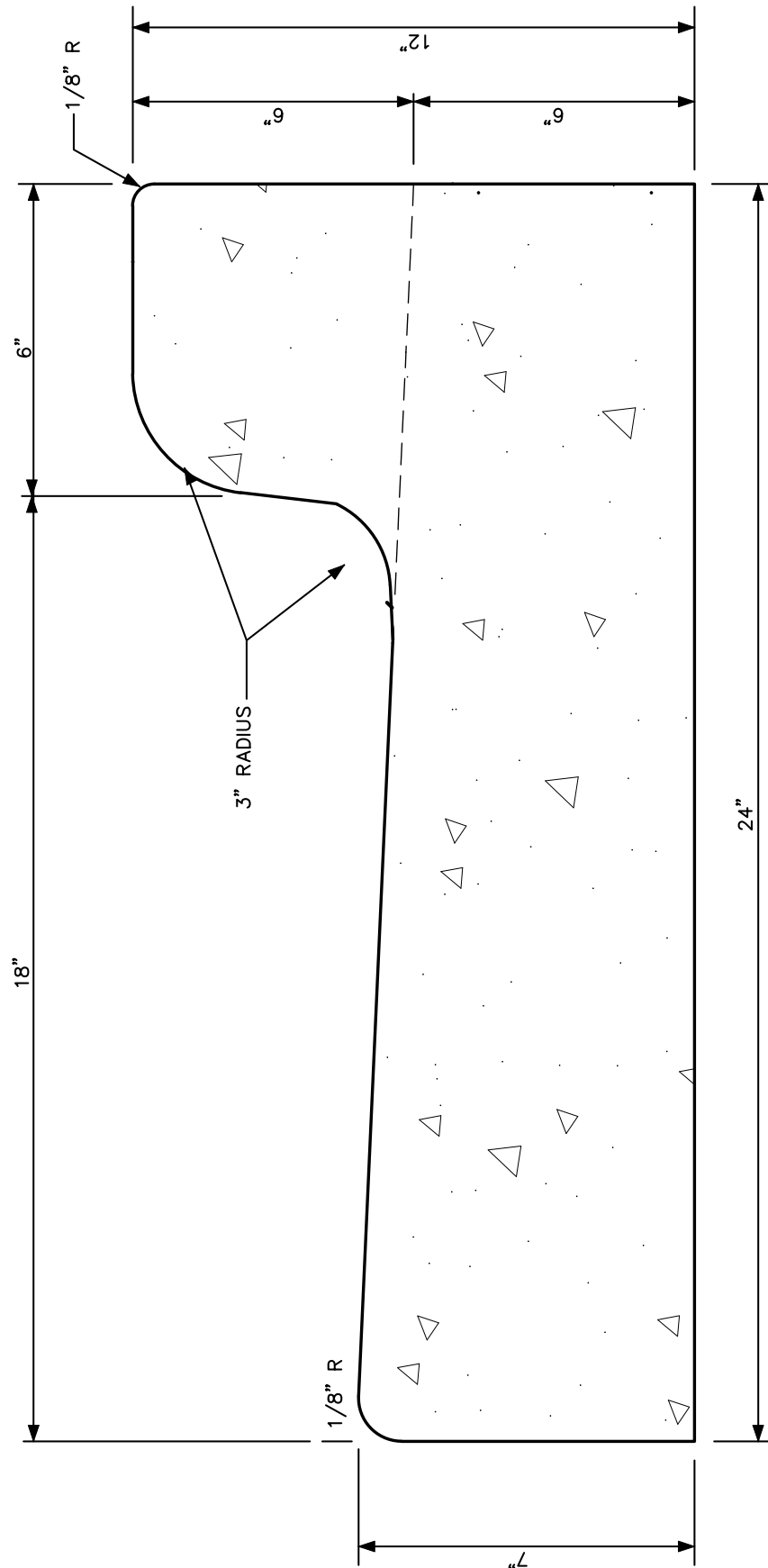


3:1 SLOPE RECOMMENDED

NOTE:
CITY MAY REQUIRE GREATER DEPTHS OF STONE BASE AND
SURFACE PAVING AS REQUIRED FOR INDUSTRIAL PARK.

DATE: JANUARY 2008	STANDARD DETAIL	CITY OF LANCASTER LANCASTER COUNTY, S.C.
DRAWN BY: WKD		
SCALE: NONE	RESIDENTIAL STREET CROSS-SECTION 50' RIGHT-OF-WAY 28' FACE TO FACE OF CURBS	FILE NO. ST-1

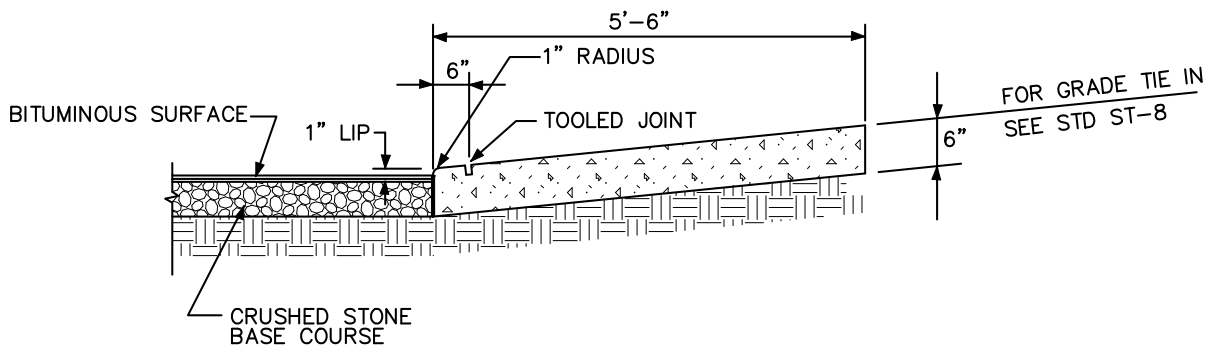
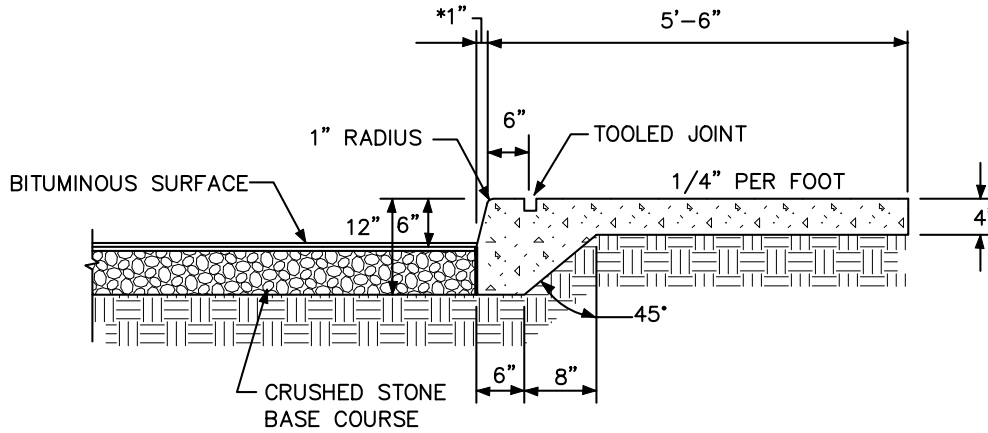


NOTE:
 CONSTRUCTION METHODS AND MATERIALS SHALL
 CONFORM TO THE NORTH CAROLINA STATE DOT
 STANDARD SPECIFICATIONS FOR ROADS AND
 STRUCTURES SECTION 846

DATE: JANUARY 2008
DRAWN BY: WKD
SCALE: NONE

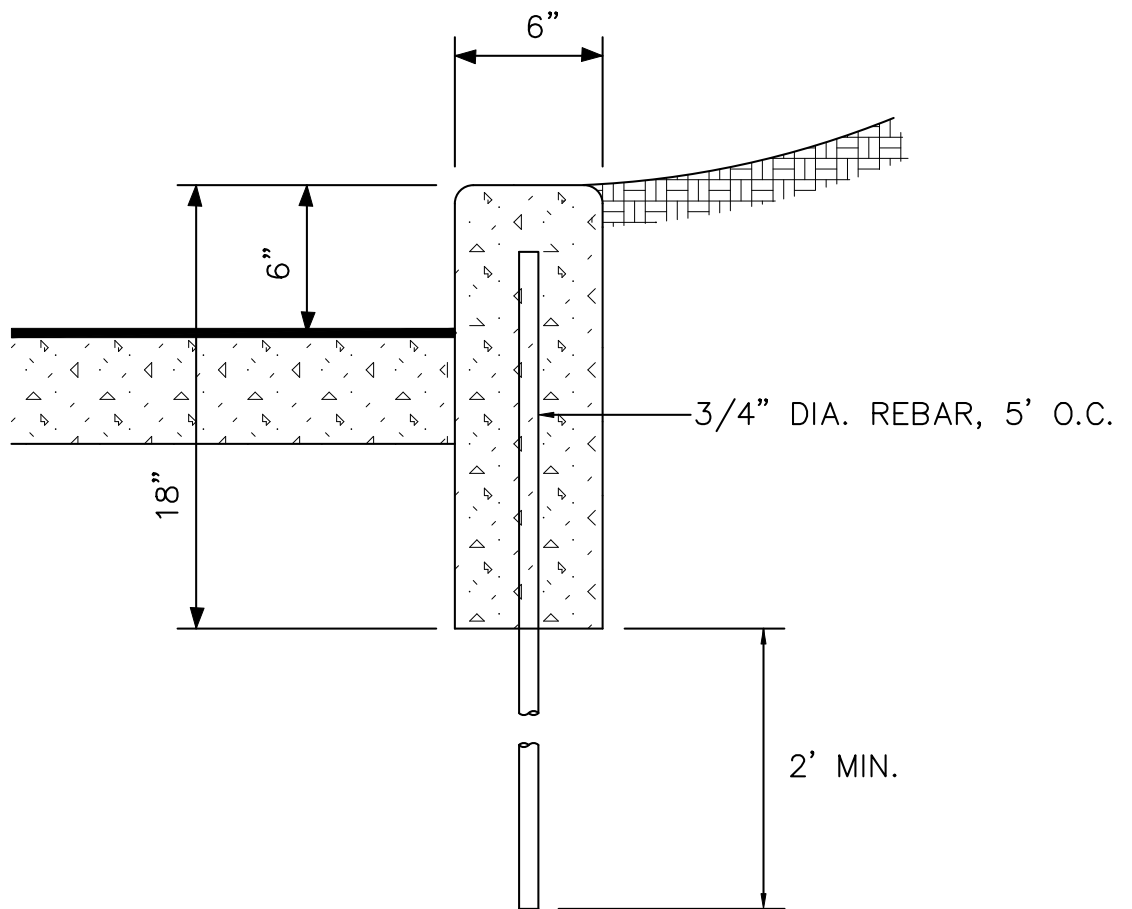
STANDARD DETAIL
24" CURB AND GUTTER

CITY OF LANCASTER LANCASTER COUNTY, S.C.	
FILE NO.	ST-2



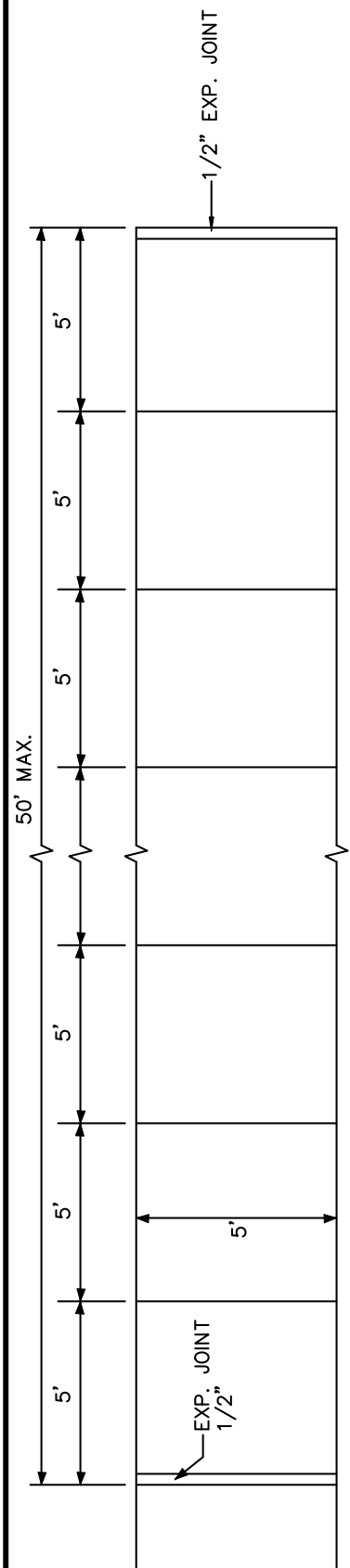
* NOTE: CONTRACTOR MAY ALSO USE 2" IN 12".

DATE: JANUARY 2008	STANDARD DETAIL	CITY OF LANCASTER LANCASTER COUNTY, S.C.
DRAWN BY: WKD		
SCALE: NONE	MONOLITHIC SIDEWALK-CURB DRIVEWAY SECTION	FILE NO. ST-3

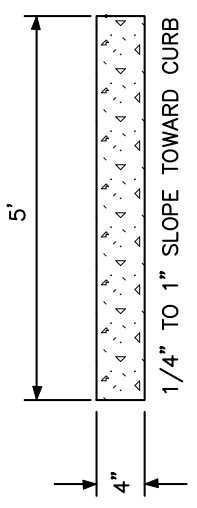


STANDARD VERTICAL CURB

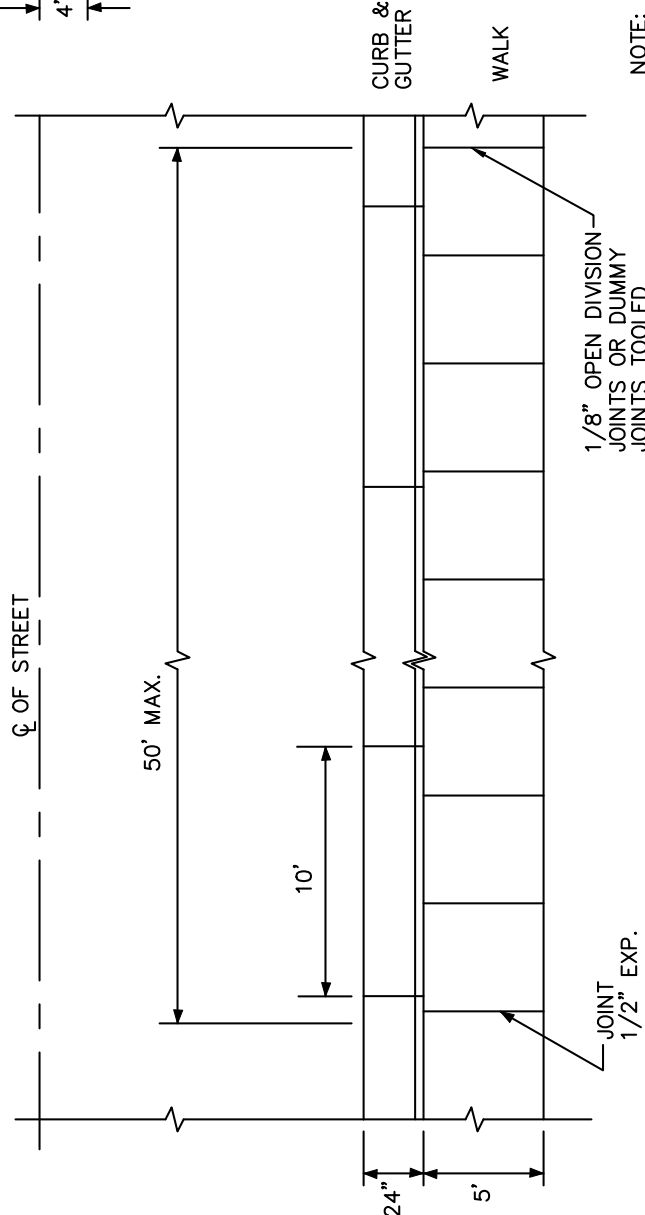
DATE: JANUARY 2008	STANDARD DETAIL	CITY OF LANCASTER	
DRAWN BY: WKD		LANCASTER COUNTY, S.C.	
SCALE: NONE	VERTICAL CURB	FILE NO.	ST-4



CONCRETE SIDEWALK
TYPICAL PLAN



CROSS-SECTION



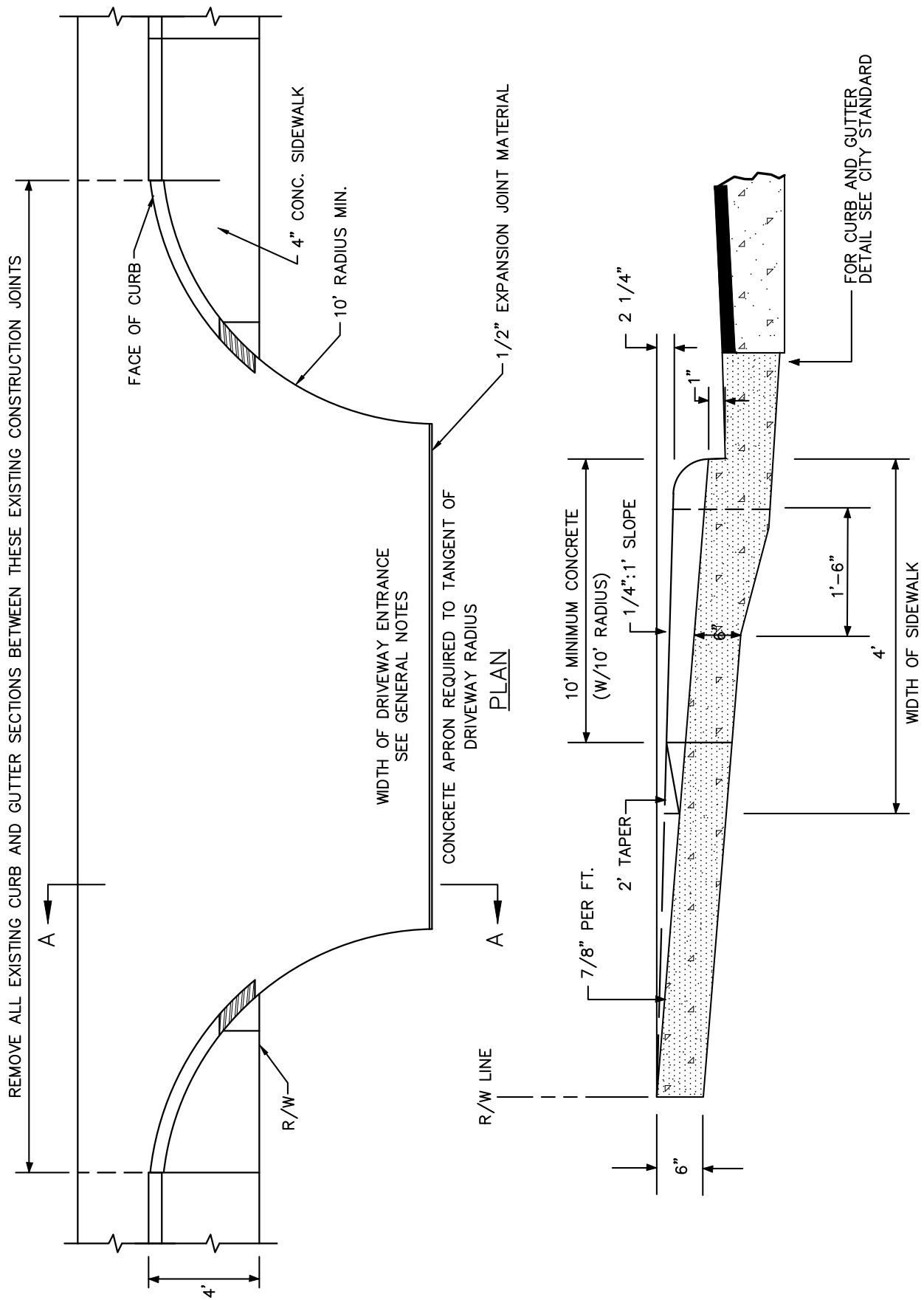
LOCATION OF JOINTS

NOTE: WHEN FRONT EDGE OF WALK IS POURED ADJACENT TO CURB OR BACK OF WALK IS POURED ADJACENT TO A BUILDING OR EXISTING CONCRETE, A 1/2" EXPANSION JOINT SHALL BE PLACED BETWEEN NEW WALK AND EXISTING STRUCTURES; WHERE A DRIVEWAY CROSSES A WALK, THE SIDEWALK SHALL HAVE A DEPTH OF 6" WITH 1/2" EXPANSION JOINT EACH SIDE OF WALK.

DATE: JANUARY 2008
DRAWN BY: WKD
SCALE: NONE

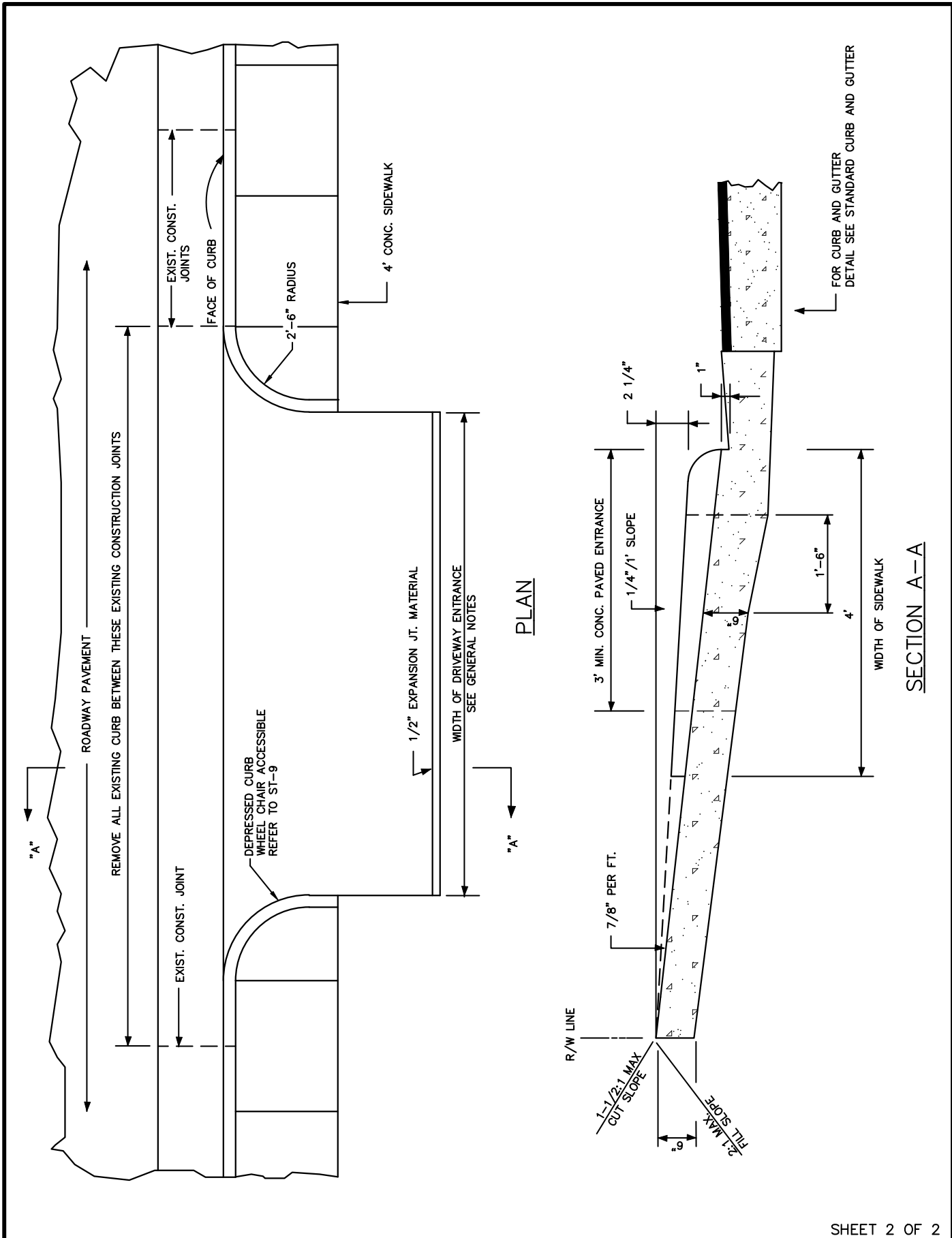
STANDARD DETAIL
CONCRETE SIDEWALK DETAIL

CITY OF LANCASTER LANCASTER COUNTY, S.C.
FILE NO. ST-5



SECTION A-A

DATE: JANUARY 2008	STANDARD DETAIL	CITY OF LANCASTER LANCASTER COUNTY, S.C.
DRAWN BY: WKD		
SCALE: NONE	INDUSTRIAL OR COMMERCIAL CONCRETE DRIVEWAY ENTRANCE 10' RADIUS	FILE NO. ST-6

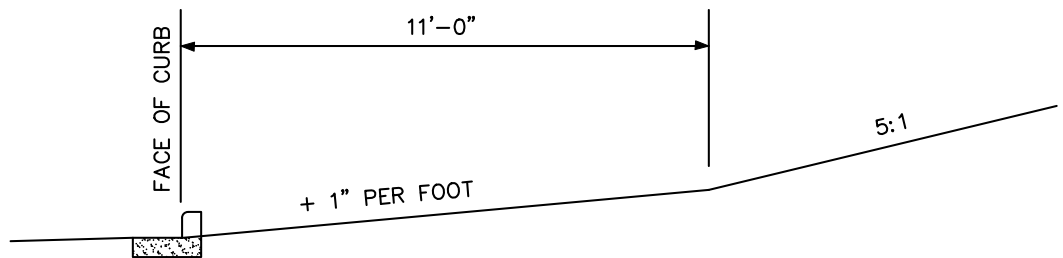
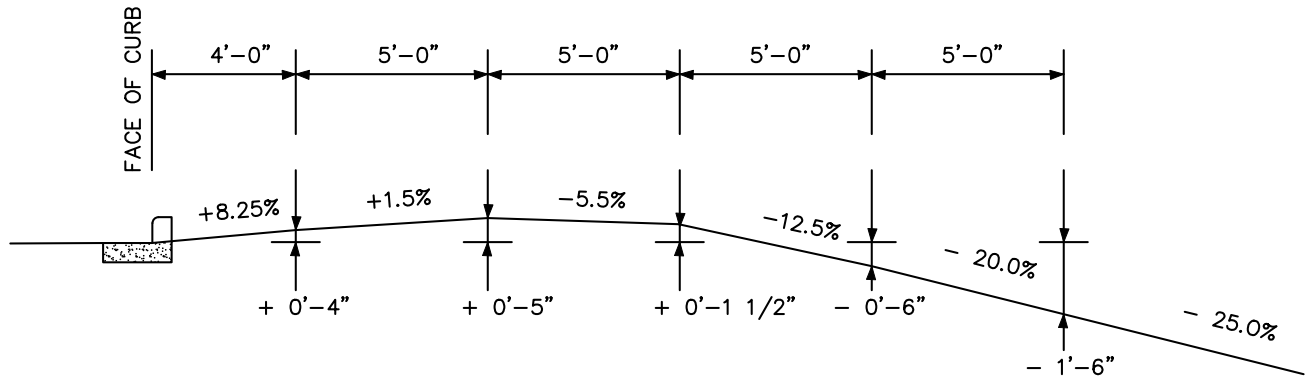


DATE: JANUARY 2008
DRAWN BY: WKD
SCALE: NONE

STANDARD DETAIL

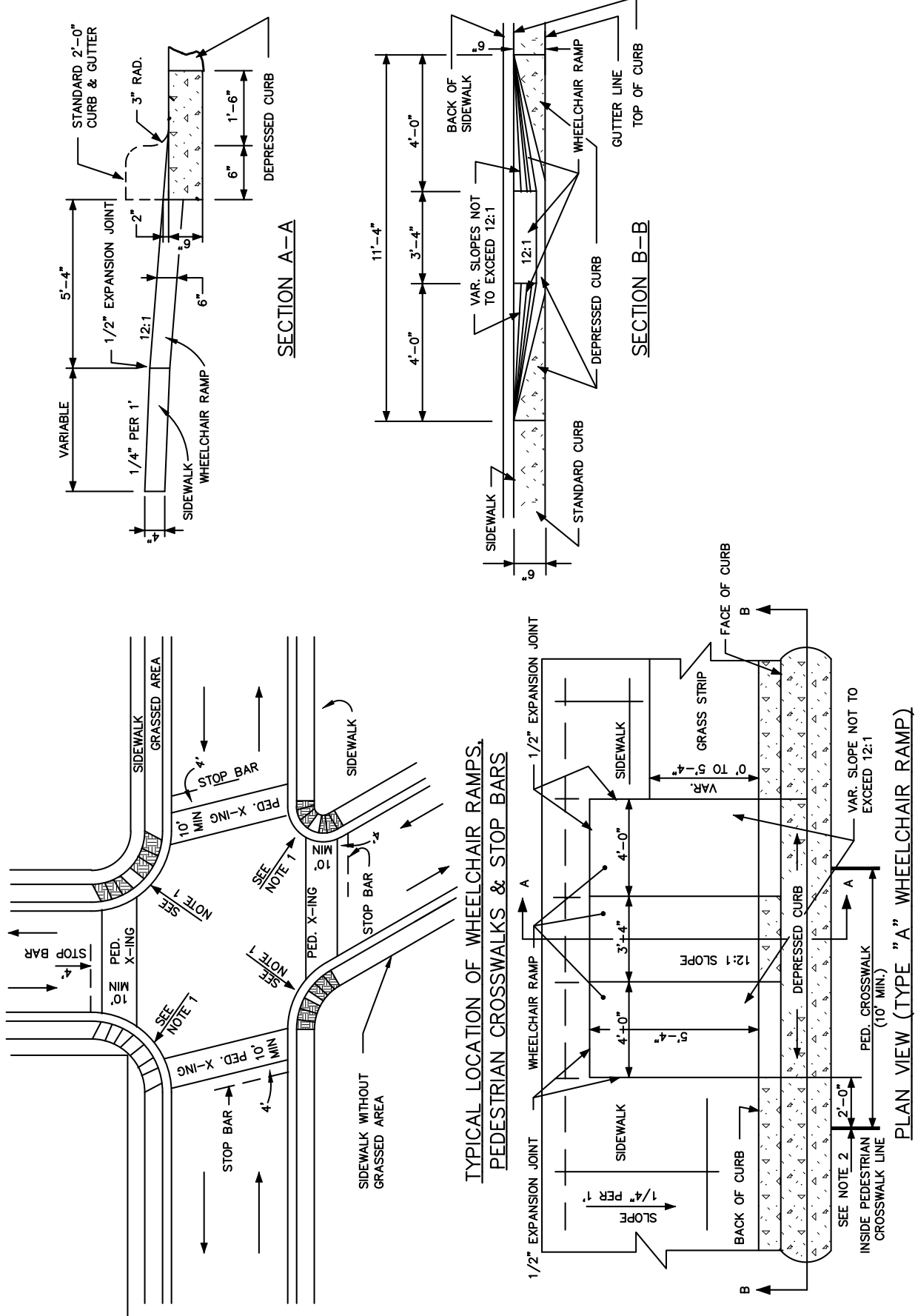
CONCRETE DRIVEWAY
RESIDENTIAL ENTRANCE

CITY OF LANCASTER LANCASTER COUNTY, S.C.	
FILE NO.	ST-7



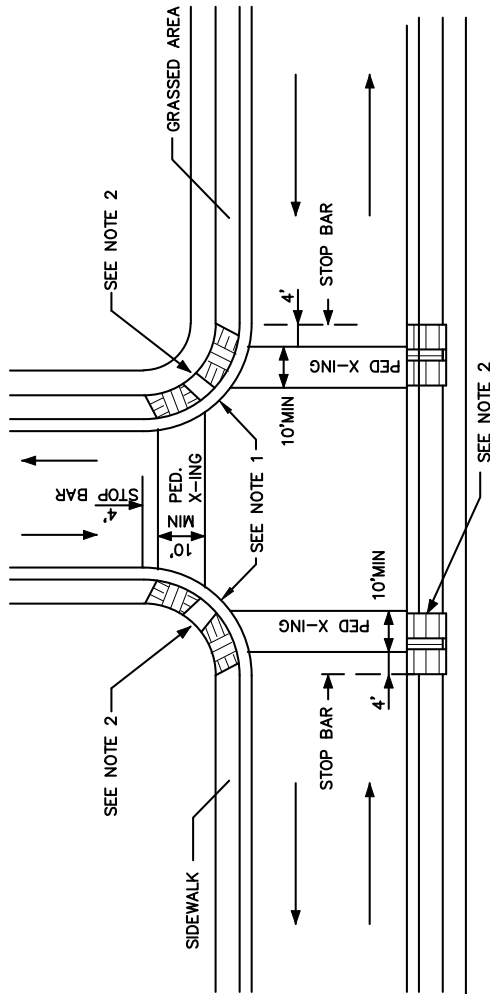
NOTE:
GRADES SHOWN ABOVE ARE MAXIMUM
ALLOWABLE GRADES.

DATE: JANUARY 2008	STANDARD DETAIL	CITY OF LANCASTER LANCASTER COUNTY, S.C.
DRAWN BY: WKD		
SCALE: NONE	GRADES FOR STANDARD DRIVEWAY ENTRANCES	FILE NO. ST-8

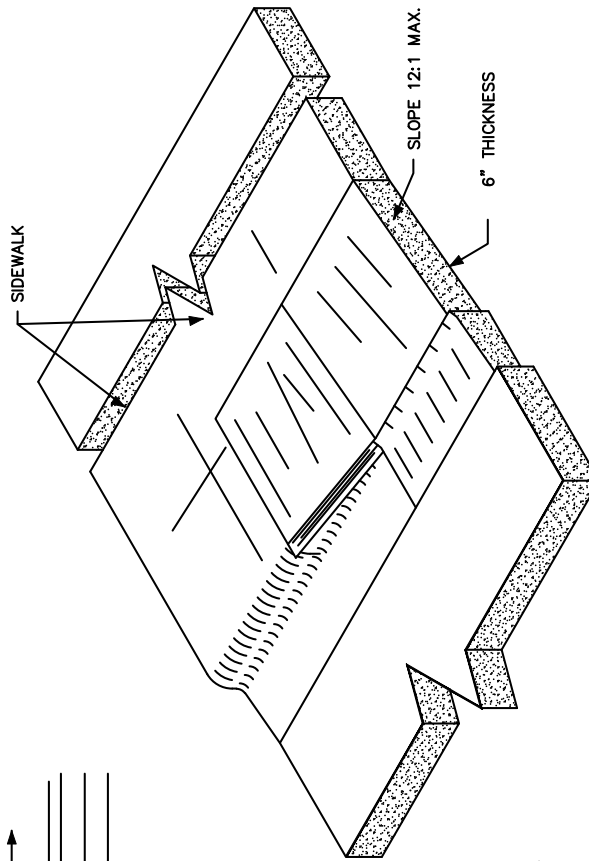
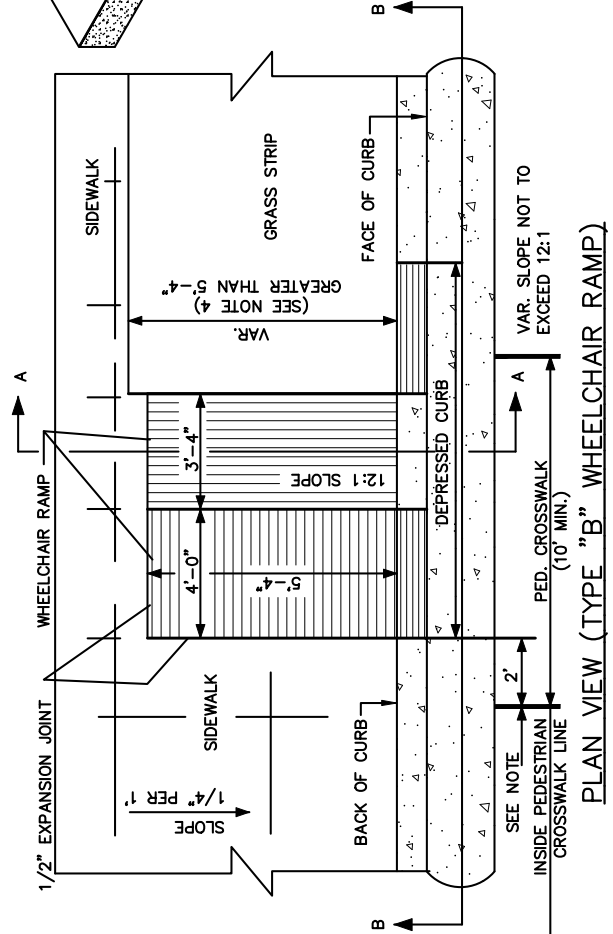


DATE: JANUARY 2008	STANDARD DETAIL	CITY OF LANCASTER LANCASTER COUNTY, S.C.
DRAWN BY: WKD		
SCALE: NONE		
DETAILS FOR TYPE "A" WHEELCHAIR RAMP		FILE NO. ST-9

TYPE "A" WHEELCHAIR RAMP
 TYPE "B" WHEELCHAIR RAMP



TYPICAL LOCATION OF WHEELCHAIR RAMPS,
 PEDESTRIAN CROSSWALKS & STOP BARS FOR TEE
 INTERSECTION



ISOMETRIC VIEW

PLAN VIEW (TYPE "B" WHEELCHAIR RAMP)

DATE: JANUARY 2008
 DRAWN BY: WKD
 SCALE: NONE

STANDARD DETAIL

DETAILS FOR
 TYPE "B" WHEELCHAIR RAMP

CITY OF LANCASTER
 LANCASTER COUNTY, S.C.

FILE NO. ST-10

GENERAL NOTES

I. LOCATION OF WHEELCHAIR RAMPS:

1. In accordance with the ratified House Bill 1296, all street curbs in North Carolina being constructed or reconstructed for maintenance procedures, traffic operations, repairs, correction of utilities or altered for any reason after September 1, 1973 shall provide wheelchair ramps for the physically handicapped at all intersections where both curb and gutter and sidewalks are provided and at other major points of pedestrian flow.
2. Wheelchair ramps should be located as indicated in detail drawings, however existing light poles, fire hydrants, drop inlets, etc. may affect placement.

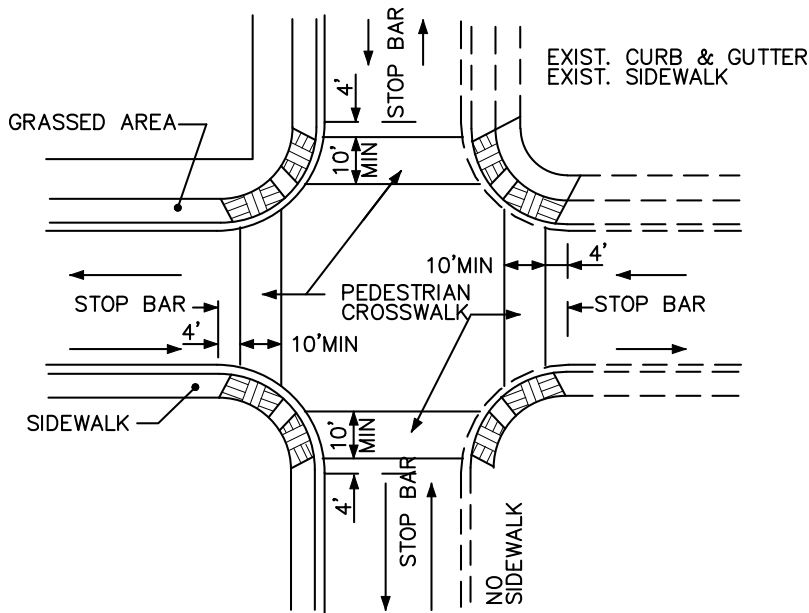
II. CONSTRUCTION NOTES:

1. No slope shall exceed 1"=1' (12:1) on the ramp or sidewalk.
2. In no case shall the width of wheelchair ramps be less than 40" (3'-4"). Widths may exceed 40" if necessary.
3. Use Class "A" concrete with the surface having a rough, nonskid type finish.
4. A 1/2" expansion joint will be required where the concrete wheelchair ramp joins any rigid pavement or structure.
5. Construction methods shall conform with those of the governing body which has jurisdiction of the particular street.

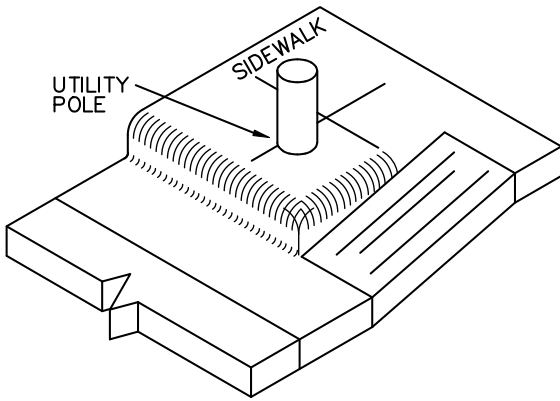
III. ADDITIONAL NOTES:

- NOTE 1. The inside pedestrian crosswalk lines shall be established by bisecting the intersection radii where marked. (See Note 7)
- NOTE 2. The wheelchair ramp shall be located so that the beginning of the wheelchair ramp will be two feet from the inside pedestrian crosswalk line.
- NOTE 3. The width of the pedestrian crosswalk shall be 10 feet unless a greater width is required to accommodate the pedestrian traffic.
- NOTE 4. Type "B" wheelchair ramps shall be used only when the grassed distance between the curb and sidewalk exceeds 5'-4".
- NOTE 5. Stop bars shall be used where it is important to indicate the point behind which vehicles are required to stop in compliance with a traffic signal, stop sign, or other legal requirement.
- NOTE 6. Parking shall be eliminated a minimum of 20 feet back of pedestrian crosswalk.
- NOTE 7. All pavement markings shall be in accordance with the latest edition of the Manual of Uniform Traffic Control Devices published by the Federal Highway Administration. This is available from the Superintendent of Documents, U.S. Government Printing Office, Washington, D.C. 20402.

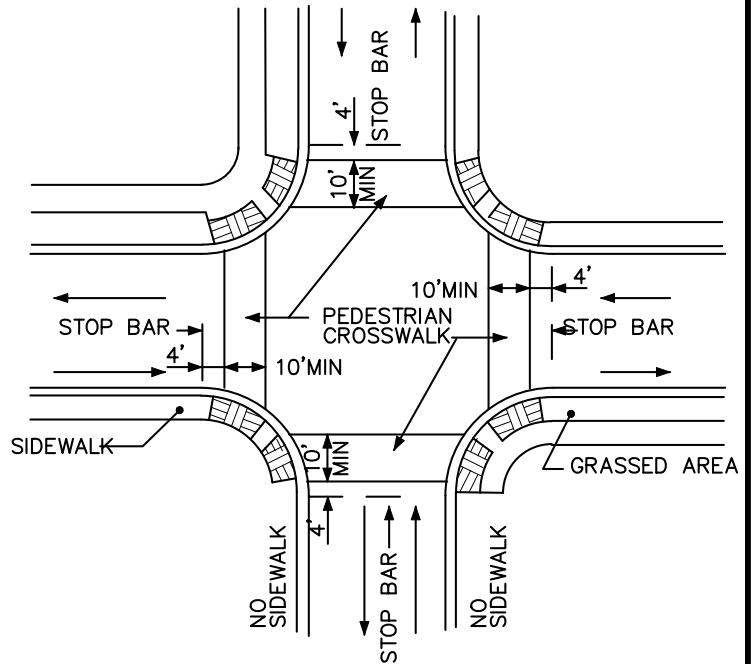
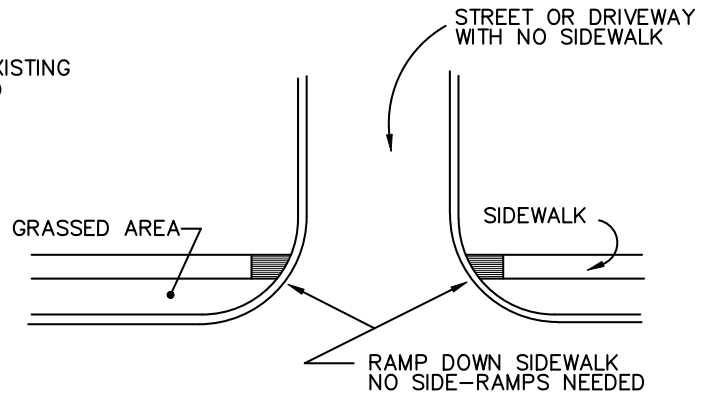
DATE: JANUARY 2008	STANDARD DETAIL	CITY OF LANCASTER LANCASTER COUNTY, S.C.
DRAWN BY: WKD		
SCALE: N/A	GENERAL NOTES FOR WHEELCHAIR RAMPS	FILE NO. ST-11



LOCATION OF WHEELCHAIR RAMP WHEN EXISTING CURB & GUTTER AND SIDEWALK IS BEYOND END OF PROPOSED CONSTRUCTION



NOTE:
USE THE METHOD SHOWN ABOVE WHEN OBSTRUCTIONS WHICH ARE NOT TO BE REMOVED ARE ENCOUNTERED ON EITHER SIDE OF WHEELCHAIR RAMPS.



TYPICAL EXAMPLE OF WHEELCHAIR RAMP LOCATIONS WHEN CROSS ROAD DOES OR DOES NOT HAVE SIDEWALK.

DATE: JANUARY 2008	STANDARD DETAIL	CITY OF LANCASTER LANCASTER COUNTY, S.C.
DRAWN BY: WKD		
SCALE: NONE	EXAMPLES OF SPECIAL SITUATIONS FOR WHEELCHAIR RAMPS AND DEPRESSED CURBS	FILE NO. ST-12